

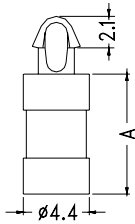
# SPACER SUPPORT - Clip / Mount Type

Hankook Fastener

- ◆ MATERIAL: PBT(UL)
- ◆ FLAME CLASS :94V-0
- ◆ COLOR: NATURAL
- ◆ UNIT: mm



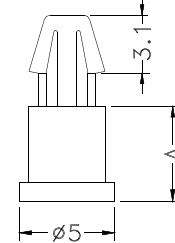
P.C.B  $\phi 2.5$   
THICKNESS 1.6



PART NO	A	PACKAGE
MAM-7	7.0	2000
MAM-8	8.0	
MAM-9	9.0	
★ MAM-11	11.1	
★ MAM-12.7	12.7	



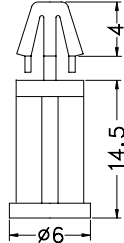
P.C.B  $\phi 3$   
THICKNESS 1.2~1.6



PART NO	A	PACKAGE
DCC-2	2.0	2000
DCC-2.5	2.5	
DCC-3	3.0	1000
DCC-3.5	3.5	
DCC-4	4.0	
DCC-4.5	4.5	
DCC-5	5.0	
DCC-5.5	5.5	
DCC-6	6.0	1000
DCC-6.5	6.5	



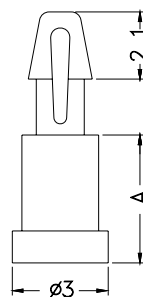
P.C.B  $\phi 3.5$   
THICKNESS 0.8~1.6



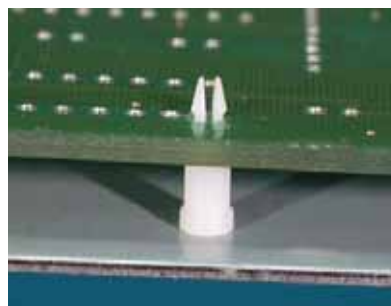
PART NO	PACKAGE
MCM-14.5	1000



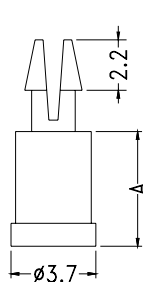
P.C.B  $\phi 1.5$   
THICKNESS 1.6



PART NO	A	PACKAGE
MASS-2	2.0	2000
MASS-2.5	2.5	
MASS-3	3.0	
MASS-3.5	3.5	
MASS-4	4.0	
MASS-5	5.0	
MASS-6	6.0	
MASS-6.5	6.5	



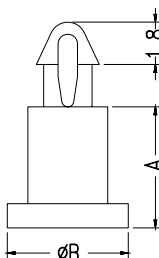
P.C.B  $\phi 2.0$   
THICKNESS 1.2~1.7



PART NO	A	PACKAGE
MS-4	4.0	2000
MS-5	5.0	



P.C.B  $\phi 2.0$   
THICKNESS 1.2~1.7

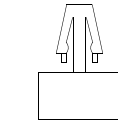
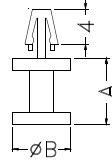


PART NO	A	B	PACKAGE
MA-2	2.0	4.1	2000
MA-2.5	2.5		
★ MA-2.5L	2.5	4.8	
MA-3	3.0		
★ MA-3A	3.0	4.1	
MA-3.5	3.5	4.2	
MA-4	4.0	4.8	
MA-5	5.0		
MA-6	6.0	5.0	
MA-6.5	6.5		
★ MA-8	8.0		
★ MA-9	9.0		



- ◆ MATERIAL: NYLON 66(UL)
- ◆ FLAME CLASS :94V-2
- ◆ COLOR: NATURAL
- ◆ UNIT: mm

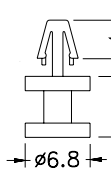
P.C.B  $\phi$ 3.0  
THICKNESS 1.2~1.7



ONLY FOR:  
DCB-2~DCB-4

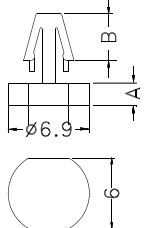
PART NO	A	B	PACKAGE
DCB-2	2.0	6.5	2000
DCB-2.5	2.5		
DCB-3	3.0	6.8	1000
DCB-3.5	3.5		
DCB-4	4.0		
DCB-5	5.0		
DCB-6	6.0		
DCB-6.5	6.5		
DCB-7	7.0		
DCB-8	8.0		
DCB-10	10.0		
DCB-15	15.0	6.0	

P.C.B  $\phi$ 3.0  
THICKNESS 2.1



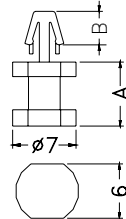
PART NO	PACKAGE
DCB-8(2)	1000

P.C.B  $\phi$ 3.0  
THICKNESS 1.2~1.7

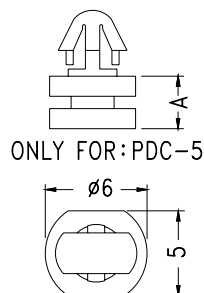
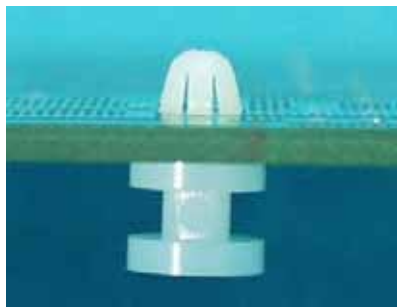


PART NO	A	B	PACKAGE
★DCB-2D	2.0	3.5	2000
DCB-3D	3.0	3.7	
DCB-3.5D	3.5	4.0	

P.C.B  $\phi$ 3.0  
THICKNESS 1.2~1.7



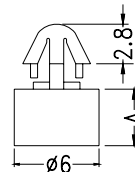
PART NO	A	B	PACKAGE
★DCB-4D	4.0	3.6	1000
★DCB-5D	5.0		
DCB-5.5D	5.5	4.0	
DCB-7D	7.0		
DCB-9D	9.0		
DCB-11D	11.0		
DCB-12D	12.0		
★DCB-13D	13.0		



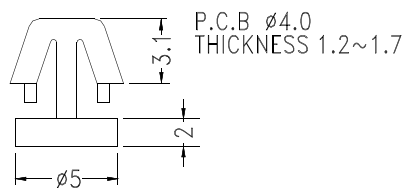
ONLY FOR: PDC-5

ONLY FOR: PDC-4.5D~PDC-7D

P.C.B  $\phi$ 3.5  
THICKNESS 1.2~1.7

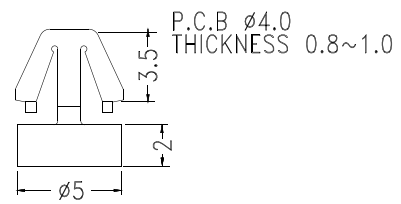


PART NO	A	PACKAGE
PDC-3	3.0	2000
PDC-3.5	3.5	
PDC-4	4.0	
PDC-5	5.0	
PDC-4.5D	4.5	
PDC-5.5D	5.5	
PDC-6D	6.0	
PDC-6.5D	6.5	
PDC-7D	7.0	



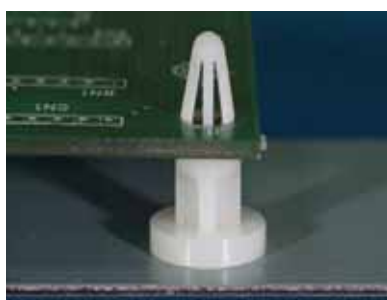
P.C.B  $\phi$ 4.0  
THICKNESS 1.2~1.7

PART NO	PACKAGE
MC-2	2000

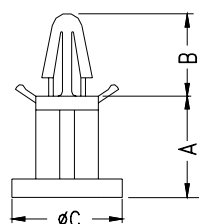


P.C.B  $\phi$ 4.0  
THICKNESS 0.8~1.0

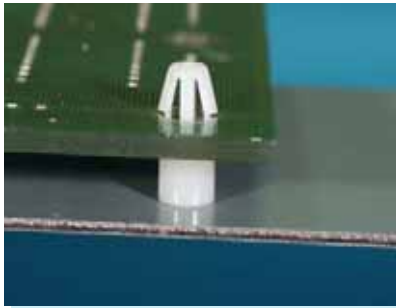
PART NO	PACKAGE
MC-2-1.2	2000



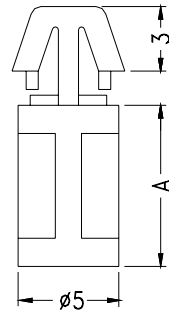
P.C.B  $\phi$ 4.0  
THICKNESS 1.2~1.7



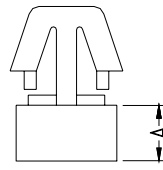
PART NO	A	B	C	PACKAGE
MBS-6	6.4	9.5	11.8	1000
MBS-8	8.0			
MBS-10	10.0	9.0	12.0	
MBS-11	11.0			



P.C.B  $\phi$ 4.0  
THICKNESS 1.2~1.7

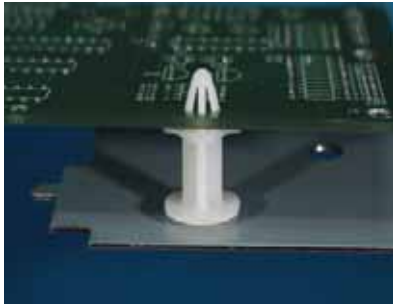


- ◆ MATERIAL: NYLON 66(UL)
- ◆ FLAME CLASS :94V-2
- ◆ COLOR:NATURAL
- ◆ UNIT:mm

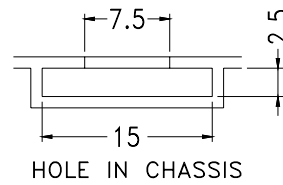
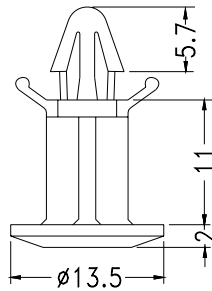


ONLY FOR:MC-3~MC-5

PART NO	A	PACKAGE
MC-3	3.0	2000
MC-4	4.0	
MC-5	5.0	
MC-6	6.3	
MC-7	7.0	
MC-8	8.0	
MC-10	10.0	
MC-12	12.7	1000



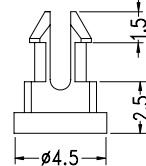
P.C.B  $\phi$ 4.5  
THICKNESS 1.2~1.7



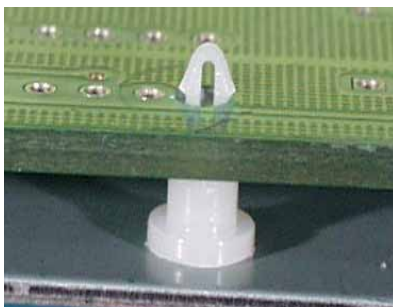
PART NO	PACKAGE
MTD-11	500



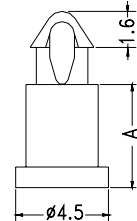
P.C.B  $\phi$ 2.5  
THICKNESS 1.6



PART NO	PACKAGE
MSM-2.5PBT	1000



P.C.B  $\phi$ 2.5  
THICKNESS 1.6~1.8



PART NO	A	PACKAGE
MAM-1.5	1.5	2000
MAM-2.5	2.5	
MAM-2.7	2.7	
MAM-3	3.0	
MAM-3.2	3.2	
MAM-3.5	3.5	
MAM-4	4.0	
MAM-4.5	4.5	
MAM-5	5.0	
MAM-6	6.0	