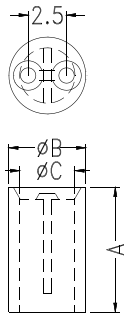
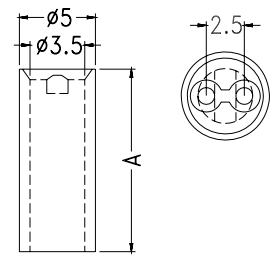
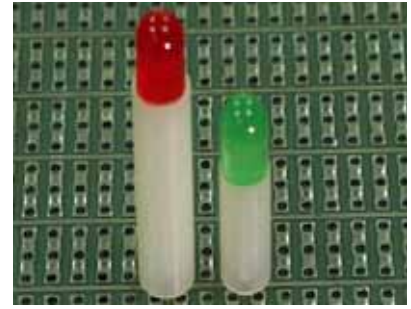


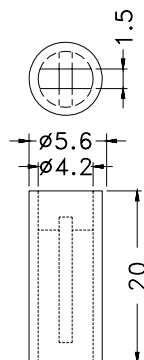
PART NO	A	PACKAGE
LED-1.5	1.5	2000
LED-2	2.0	
LED-2.5	2.5	
LED-3	3.0	
LED-3.5	3.5	
LED-4	4.0	
LED-4.5	4.5	
LED-5	5.0	
LED-5.5	5.5	
LED-6	6.0	
LED-6.5	6.5	
LED-6.8	6.8	
LED-7	7.0	
LED-7.5	7.5	
LED-8	8.0	
LED-8.5	8.5	
LED-8.8	8.8	
LED-9	9.0	
LED-9.5	9.5	
LED-10	10.0	
LED-10S	10.0	
LED-10.5	10.5	
LED-11	11.0	
LED-11.5	11.5	
LED-12	12.0	

PART NO	A	PACKAGE
LED-12.5	12.5	2000
LED-13	13.0	
LED-13.5	13.5	1000
LED-14	14.0	
LED-14.5	14.5	
LED-15	15.0	
LED-15.5	15.5	
LED-16	16.0	
LED-16.5	16.5	
LED-17	17.0	
LED-17.5	17.5	
LED-17.7	17.7	
LED-18	18.0	
LED-18.5	18.5	
LED-19	19.0	
LED-19.5	19.5	
LED-20	20.0	
LED-20.5	20.5	
LED-21	21.0	
LED-21.5	21.5	
LED-22	22.0	
LED-22.5	22.5	
LED-23	23.0	
LED-23.5	23.5	
LED-24	24.0	

- ◆ MATERIAL: NYLON 66(UL) ● φ 5mm LED
- ◆ FLAME CLASS : 94V-2/94V-0
- ◆ COLOR: NATURAL/BLACK
- ◆ UNIT:mm

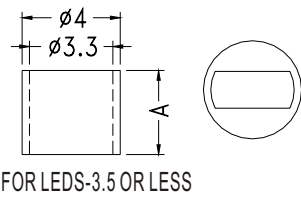
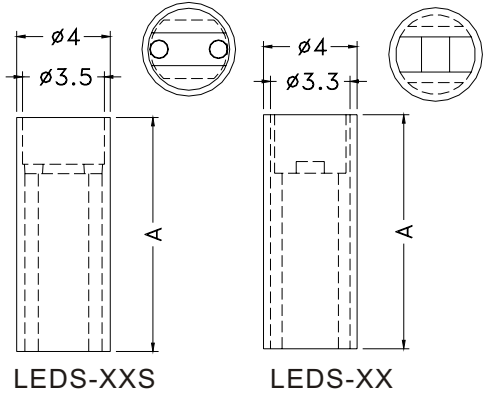
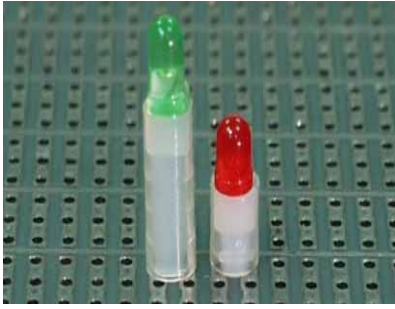


PART NO	A	B	C	PACKAGE
LEDW-2	2.0	5.6	3.5	2000
LEDW-5	5.0	5.0	3.6	
LEDW-9	9.0			
LEDW-12	12.0			
LEDW-15	15.0	5.6	4.2	1000
LEDW-18.5	18.5	5.6	4.2	
LEDW-21	21.0			
LEDW-21.5	21.5			
LEDW-22	22.0			
LEDW-23.5	23.5			



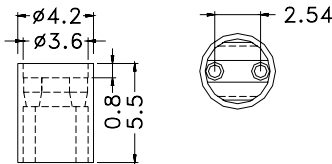
PART NO	PACKAGE
LEDW-20	2000

- ◆ MATERIAL: NYLON 66(UL) φ 3mm LED
- ◆ FLAME CLASS :94V-2/94V-0
- ◆ COLOR: NATURAL/BLACK
- ◆ UNIT: mm

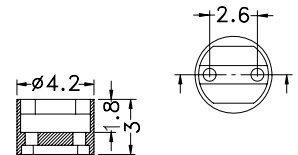


PART NO	A	PACKAGE
LEDS-1	1.0	2000
LEDS-1.5	1.5	
LEDS-2	2.0	
LEDS-2.5	2.5	
LEDS-3	3.0	
LEDS-3.5	3.5	
LEDS-4	4.0	
LEDS-4.5	4.5	
LEDS-5	5.0	
LEDS-5.5	5.5	
LEDS-6	6.0	
LEDS-6.5	6.5	1000
LEDS-7	7.0	
LEDS-7.5	7.5	
LEDS-8	8.0	
LEDS-8.5	8.5	
LEDS-9	9.0	
LEDS-9.5	9.5	
LEDS-10	10.0	
LEDS-10.5	10.5	
LEDS-11	11.0	
LEDS-11.5	11.5	

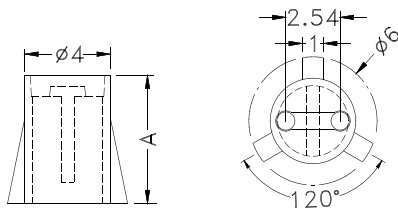
PART NO	A	PACKAGE
LEDS-12	12.0	2000
LEDS-12.5	12.5	
LEDS-13	13.0	
LEDS-13.5	13.5	
LEDS-14	14.0	
LEDS-14.5	14.5	
LEDS-15	15.0	1000
LEDS-15.5	15.5	
LEDS-16	16.0	
LEDS-16.5	16.5	
LEDS-17	17.0	
LEDS-17.5	17.5	
LEDS-18	18.0	
LEDS-18.5	18.5	
LEDS-19	19.0	
LEDS-19.5	19.5	
LEDS-20	20.0	
LEDS-20.5	20.5	
LEDS-21	21.0	
LEDS-21.5	21.5	
LEDS-22	22.0	
LEDS-22.5	22.5	
LEDS-23	23.0	
LEDS-23.5	23.5	
LEDS-24	24.0	



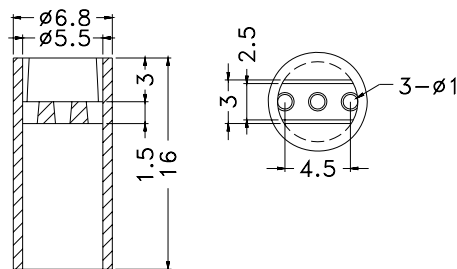
PART NO	PACKAGE
LEDL-5.5	2000



PART NO	PACKAGE
LEDL-3	2000

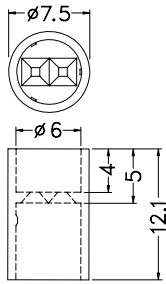
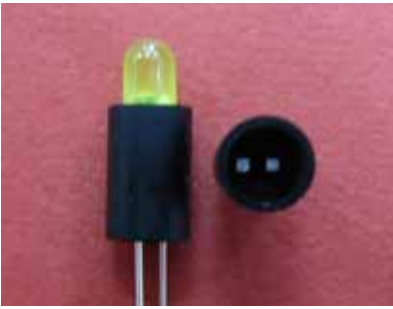


PART NO	A	PACKAGE
LEDO-6	6.0	2000
LEDO-9.5	9.5	
LEDO-15.5	15.5	1000

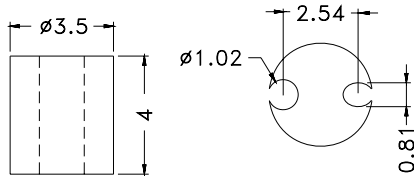


PART NO	PACKAGE
LEH3-16	2000

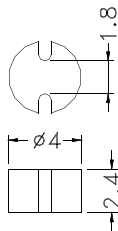
- ◆ MATERIAL: NYLON 66(UL)
- ◆ FLAME CLASS :94V-2
- ◆ COLOR:BLACK
- ◆ UNIT:mm



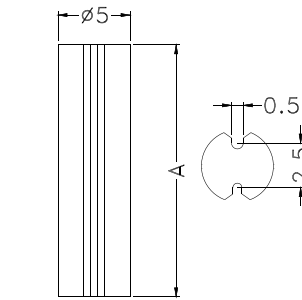
PART NO	PACKAGE
LEDD-12	1000



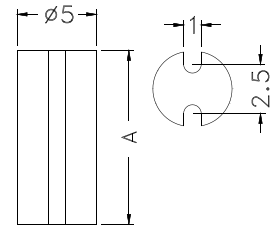
PART NO	PACKAGE
LEDG-4	2000



PART NO	PACKAGE
LEDT-2.4	2000



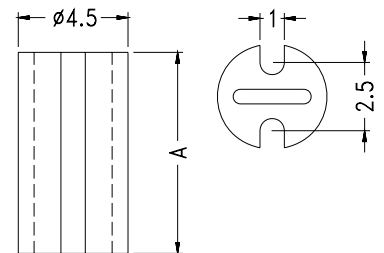
PART NO	A	PACKAGE
LEDT-5	5.0	1000
LEDT-9	9.0	
LEDT-11.0	11.0	
LEDT-14.5	14.5	



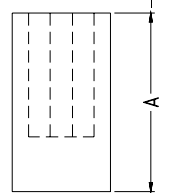
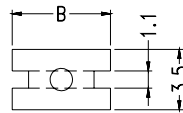
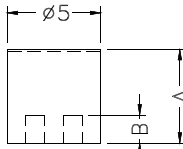
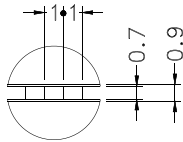
PART NO	A	PACKAGE
LEDT-16.1	16.1	1000
LEDT-16.4	16.4	
LEDT-17.5	17.5	
LEDT-20	20.2	
LEDT-22	22.0	
LEDT-22.7	22.7	
★LEDT-23.5	23.5	



PART NO	A	PACKAGE
LEDH-6	6.0	2000
LEDH-6.5	6.5	
LEDH-7	7.0	
LEDH-7.5	7.5	
LEDH-8	8.0	
LEDH-8.5	8.5	
LEDH-9	9.0	
LEDH-9.5	9.5	
LEDH-10	10.0	
LEDH-10.5	10.5	
LEDH-11	11.0	
LEDH-11.5	11.5	
LEDH-12	12.0	
LEDH-12.5	12.5	
LEDH-13	13.0	
LEDH-13.5	13.5	
LEDH-14	14.0	
LEDH-14.5	14.5	
LEDH-15	15.0	
LEDH-15.5	15.5	
★LEDH-18	18.0	



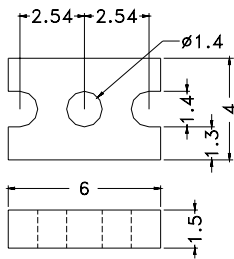
PART NO	A	PACKAGE
LEDH-2	2.0	2000
LEDH-2.5	2.5	
LEDH-3	3.0	
LEDH-3.5	3.5	
LEDH-4	4.0	
LEDH-4.5	4.5	
LEDH-5	5.0	
LEDH-5.5	5.5	



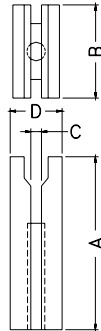
- ◆ MATERIAL: NYLON 66(UL)
- ◆ FLAME CLASS :94V-2
- ◆ COLOR: NATURAL
- ◆ UNIT: mm

PART NO	A	B	PACKAGE
LEDM-4	4.0	1.0	2000
LEDM-5	5.0	1.5	

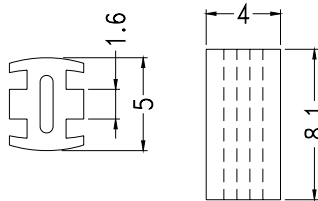
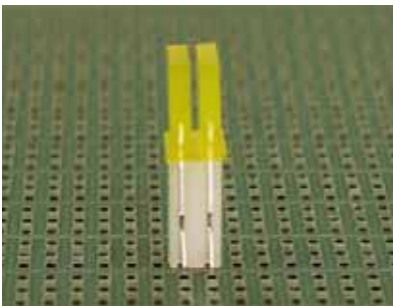
PART NO	A	B	PACKAGE	
LED3X3	3.0	5.7	2000	
LED3X4	4.0			
LED3X5	5.0			
LED3X6	6.0			
LED3X7	7.0			
LED3X8	8.0	5.7	1000	
LED3X9	9.0			
LED3X10	10.0			
LED3X11	11.0			6.0
LED3X12	12.0			5.7
LED3X13	13.0			
LED3X14	14.0			
LED3X15	15.0	7.0		
LED3X16	16.0	5.7		
LED3X17	17.0			
LED3X18	18.0			
LED3X18.5	18.5			
LED3X19	19.0			



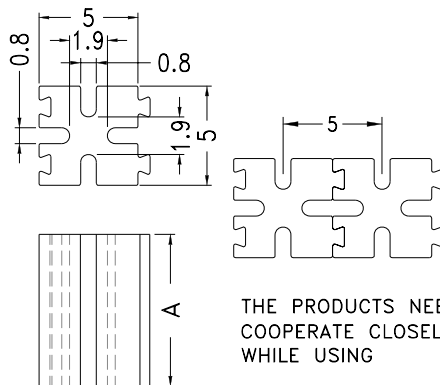
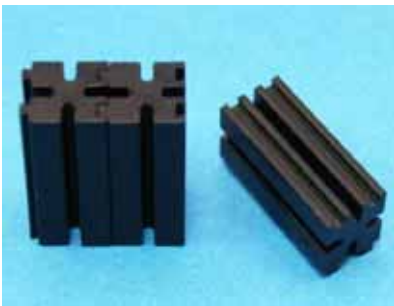
PART NO	PACKAGE
LED3X1.5R	2000



PART NO	A	B	C	D	PACKAGE
LED3X13-1	13.0	7.0	0.8	3.5	1000
LED3X16-1	16.0	6.0	0.9	3.9	



PART NO	PACKAGE
LED-208	2000



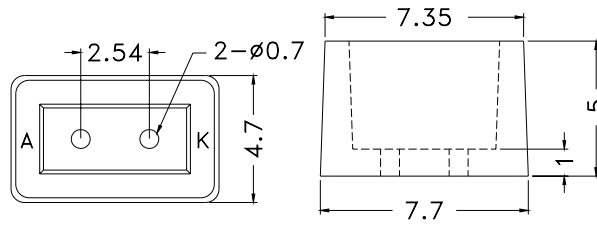
THE PRODUCTS NEED TO COOPERATE CLOSELY WHILE USING

PART NO	A	PACKAGE
LEDP-3	3.0	2000
LEDP-4	4.0	
LEDP-5	5.0	
LEDP-6	6.0	
LEDP-7	7.0	
LEDP-8	8.0	
LEDP-9	9.0	
LEDP-10	10.0	
LEDP-11	11.0	
LEDP-12	12.0	

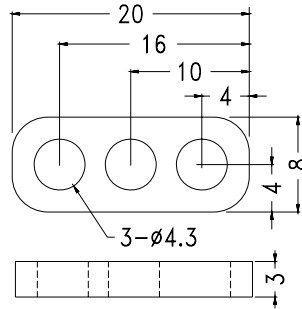
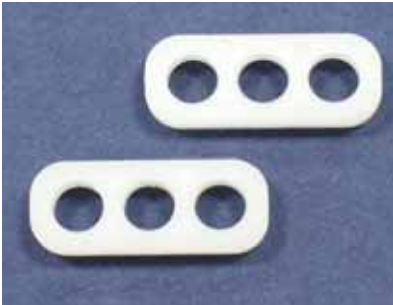
LED SUPPORT

Hankook Fastener

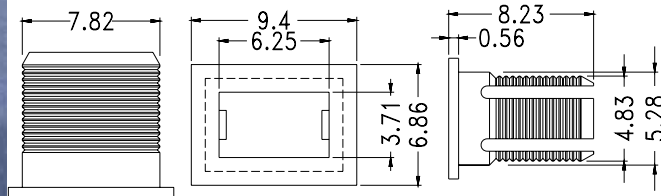
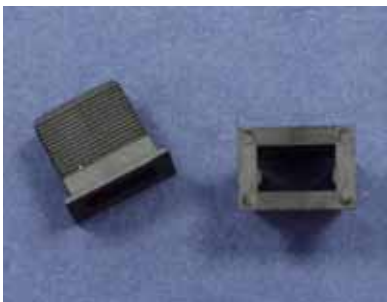
- ◆ MATERIAL: NYLON 66(UL)
- ◆ FLAME CLASS :94V-2
- ◆ COLOR:NATURAL
- ◆ UNIT:mm



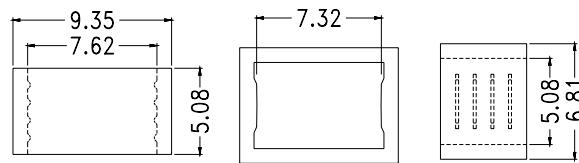
PART NO	PACKAGE
LEF-1	2000



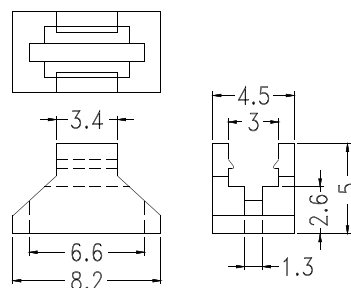
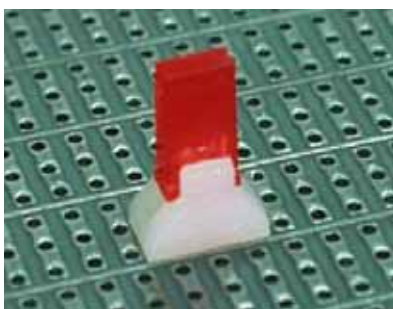
PART NO	PACKAGE
LEDI3-3	1000



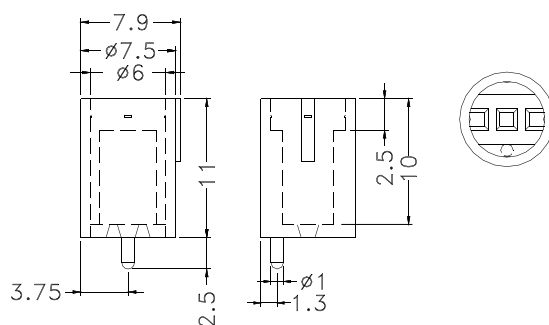
PART NO	PACKAGE
LEQ-2	1000



PART NO	PACKAGE
LEQ-2T	1000



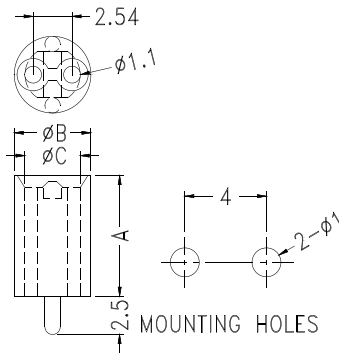
PART NO	PACKAGE
LEC-1	2000



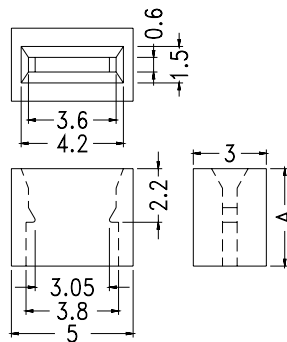
PART NO	PACKAGE
LECC-8.5	1000



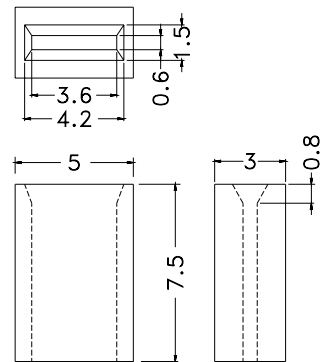
- ◆ MATERIAL: NYLON 66(UL)
- ◆ FLAME CLASS :94V-2
- ◆ COLOR:NATURAL
- ◆ UNIT:mm



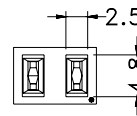
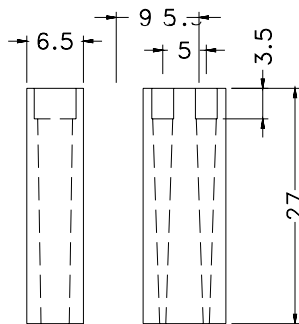
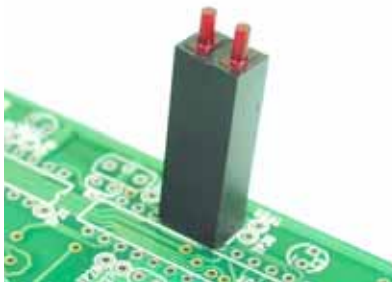
PART NO	A	B	C	PACKAGE
LEDK-4	4.0	5	3.6	2000
LEDK-5	5.0	5.6	3.8	
LEDK-6	6.0	5	3.6	
LEDK-7	7.0			
LEDK-8	8.0			
LEDK-9	9.0			
LEDK-10	10.0			
LEDK-11.5	11.5			1000
LEDK-12	12.0			
LEDK-12.5	12.5			
LEDK-13	13.0			
LEDK-14	14.0			
LEDK-18	18.0			



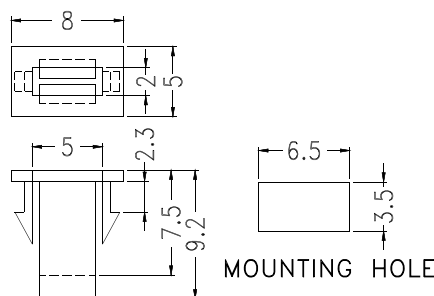
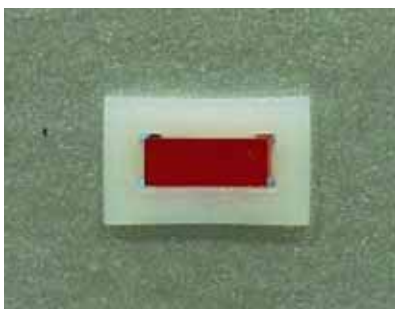
PART NO	A	PACKAGE
LEDJ-4	4.0	2000
★LEDJ-4.5	4.5	



PART NO	PACKAGE
LEDJ-7.5	2000



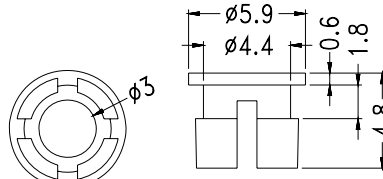
PART NO	PACKAGE
ELH2-27	500



PART NO	PACKAGE
LEQ-1	2000

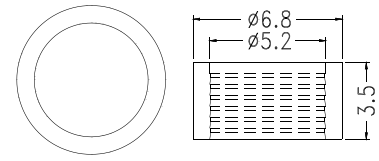
- ◆ MATERIAL: NYLON 66(UL)
- ◆ FLAME CLASS :94V-2
- ◆ COLOR: BLACK
- ◆ UNIT: mm

● φ 3LED

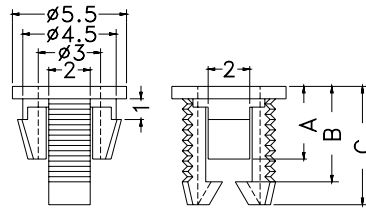


CHASSIS φ4.5

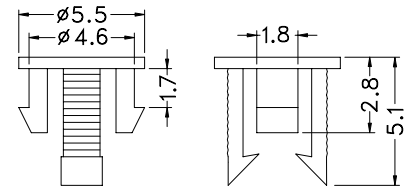
PART NO	PACKAGE
LED3-2	2000



PART NO	PACKAGE
LED3-1B	2000

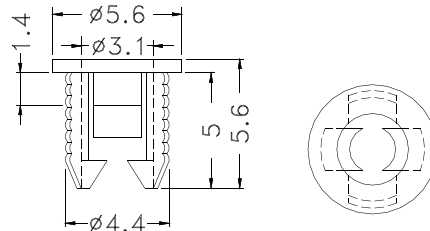


PART NO	A	B	C	PACKAGE
LED3-4	3.5	4.6	5.7	2000
★LED3-6	4.2	5.3	6.4	2000



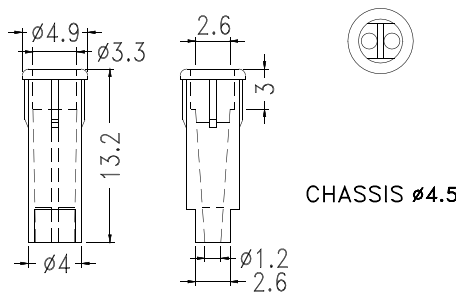
CHASSIS φ4.5

PART NO	PACKAGE
LED3-7	2000



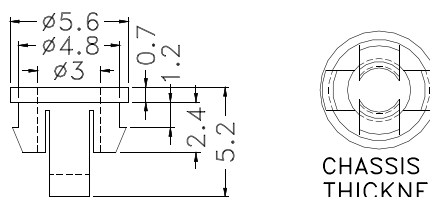
CHASSIS φ4.5

PART NO	PACKAGE
LED3-1	2000



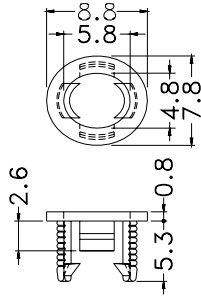
CHASSIS φ4.5

PART NO	PACKAGE
LED3-3	2000



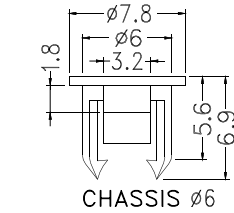
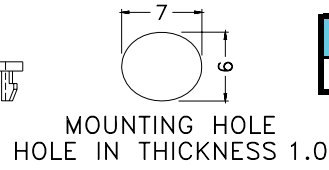
CHASSIS φ5.0
THICKNESS 1.0~1.1

PART NO	PACKAGE
LED3-5	2000



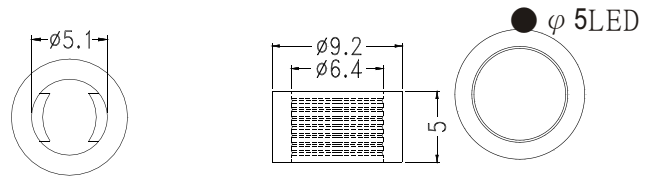
- ◆ MATERIAL: NYLON 66(UL)
 - ◆ FLAME CLASS :94V-2
 - ◆ COLOR: BLACK
 - ◆ UNIT: mm
- ϕ 3LED

PART NO	PACKAGE
LED5-6	2000

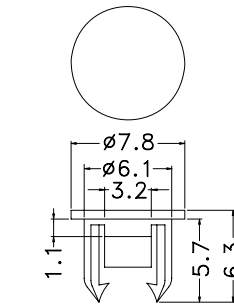


CHASSIS ϕ 6

PART NO	PACKAGE
LED5-5	2000



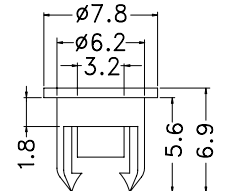
PART NO	PACKAGE
LED5-5T	2000



CHASSIS ϕ 6

● ϕ 5LED

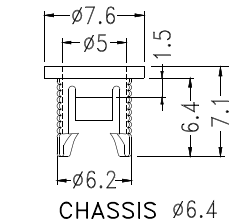
PART NO	PACKAGE
LED5-11	2000



CHASSIS ϕ 6.2

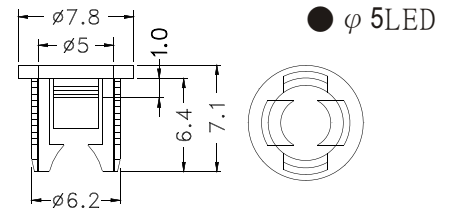
● ϕ 5LED

PART NO	PACKAGE
LED5-13	2000



CHASSIS ϕ 6.4

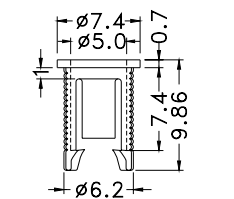
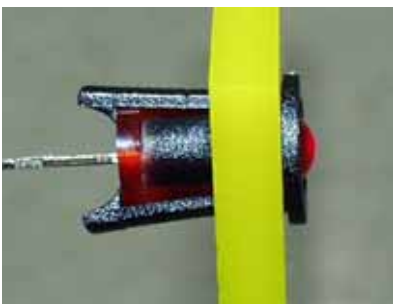
PART NO	PACKAGE
LED5-1	2000



CHASSIS ϕ 6.4

● ϕ 5LED

PART NO	PACKAGE
LED5-1S	2000



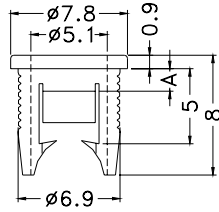
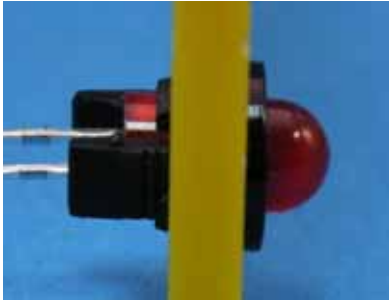
CHASSIS ϕ 6.35

PART NO	PACKAGE
LED5-8	2000

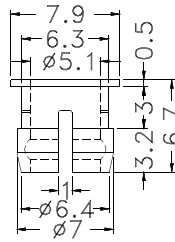
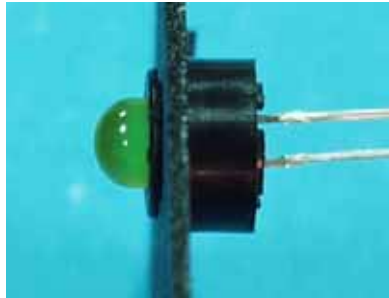
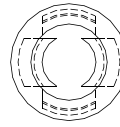
- ◆ MATERIAL: NYLON 66(UL)
- ◆ FLAME CLASS :94V-2
- ◆ COLOR: BLACK/WHITE
- ◆ UNIT: mm

● \varnothing 5LED

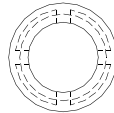
PART NO	A	PACKAGE
LED5-9	1.5	1000
★ LED5-9S	1.0	1000



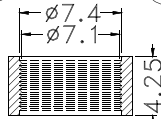
CHASSIS \varnothing 7.0
THICKNESS 0.8~1.4



FOR LED5-2A



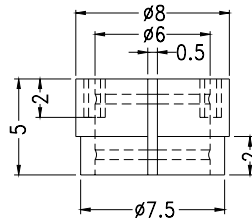
FOR LED5-2B



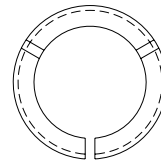
CHASSIS \varnothing 6.4

PART NO	PACKAGE
LED5-2	2000

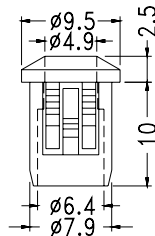
● \varnothing 5LED



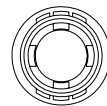
● \varnothing 5LED



PART NO	PACKAGE
COC8-5	2000

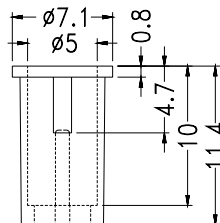


CHASSIS \varnothing 8

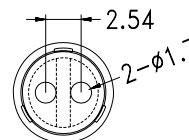


● \varnothing 5LED

PART NO	PACKAGE
LED5-3	1000

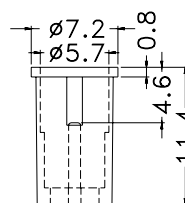


CHASSIS \varnothing 6.35

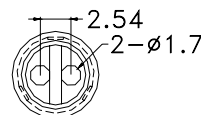


● \varnothing 5LED

PART NO	PACKAGE
LED5-4	1000



CHASSIS \varnothing 6.4
THICKNESS 0.8~1.4



B-9

● \varnothing 5LED

PART NO	PACKAGE
LED5-10	1000