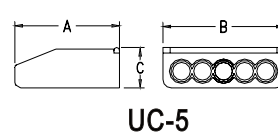
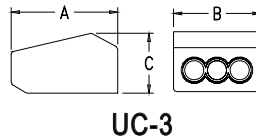
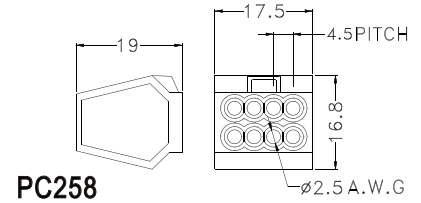
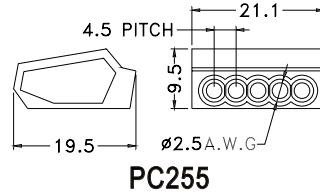
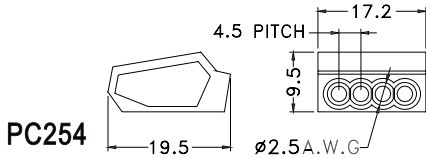
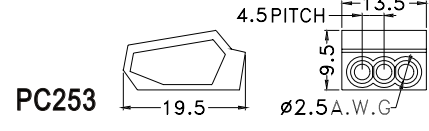
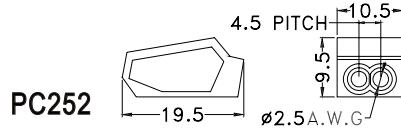




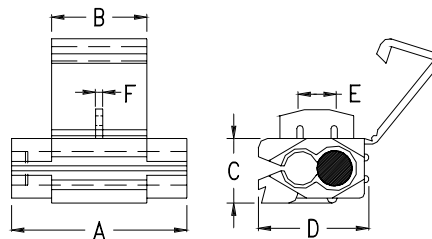
PART NO	COLOR	POLES	PACKAGE
PC252	RED	2	500
PC253	ORANGE	3	
PC254	YELLOW	4	
PC255	GRAY	5	
PC258	BLACK	8	250

- ◆ MATERIAL: PA 66 UL94V-2
- ◆ UNIT: mm



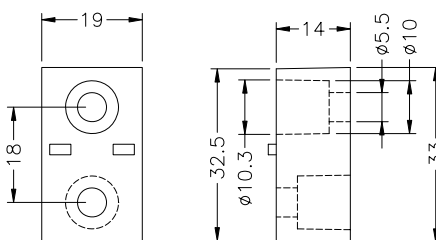
- ◆ MATERIAL: NYLON 66(UL)
- ◆ FLAME CLASS: 94V-2
- ◆ COLOR: GRAY
- ◆ UNIT: mm

PART NO	A	B	C	SUITABLE ELECTRIC WIRE	THE HIGHEST VOLTAGE, CURRENT	LENGTH STRIPPED WIRE	PACKAGE	
UC-3	19.6	13.8	9.7	3X1.2~2 mm(d)	380V, 27A	10.0~13.0mm	100	無安規
UC-5	19.3	21.9	10.1	5X1.2~2 mm(d)				有安規



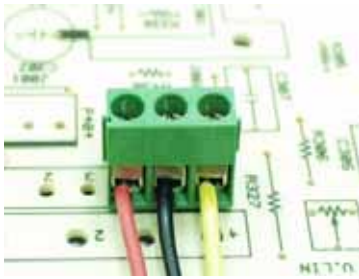
- ◆ HOUSING MATERIAL: P.P
- ◆ METAL MATERIAL: COPPER
- ◆ FINISH: TIN PLATED
- ◆ UNIT: mm

PART NO	WIRE RANGE		A	B	C	D	E	F	COLOR	PACKAGE
	AWG	mm ²								
3MR	22~18	1.25	19.5	10.6	8.2	13.5	3.9	0.8	RED	500
3MB	16~14	2.0							BLUE	
3MY	12~10	5.5	20.0	20.0	11.1	15.0	4.8	0.9	YELLOW	200



- ◆ MATERIAL: PBT(UL)
- ◆ FLAME CLASS: 94V-0
- ◆ COLOR: BLACK
- ◆ UNIT: mm

PART NO	PACKAGE
TERBL-33	200

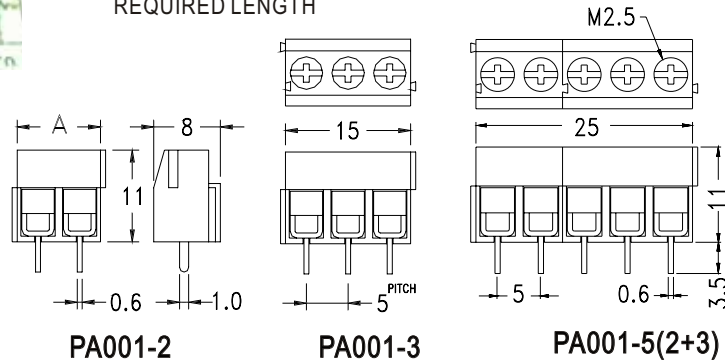


MATERIAL:

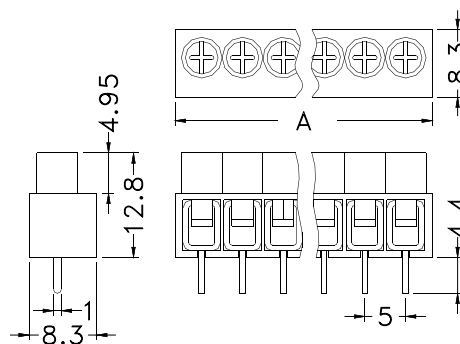
- ◆ HOUSING: THERMOPLASTIC (UL)94V-2
- ◆ TERMINAL: TIN PLATED BRASS
- ◆ WIRE PROTECTOR: STEEL
- ◆ SCREW: M2.5, PLATED STEEL
- ◆ COLOR: GREEN
- ◆ THESE 2 AND 3 POLES TERMINAL BLOCK CAN EASILY BE INTERLOCKED TO ANY REQUIRED LENGTH

TECHNICAL DATA:

- ◆ WORKING TEMPTURE: 105°C
- ◆ WIRE RANGE: 26-14 AWG
- ◆ VOLTAGE: 250V
- ◆ CURRENT: 10A

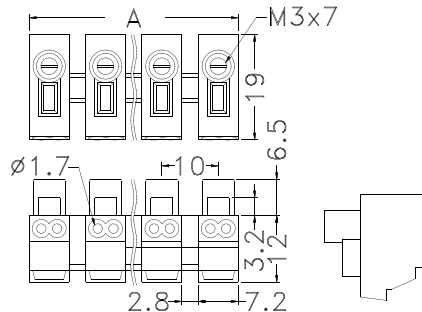


PART NO	A
PA001-2	10.0
PA001-4	20.0
PA001-6	30.0
PA001-8	40.0
PA001-10	50.0



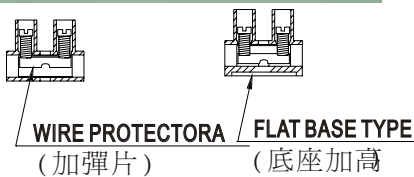
- ◆ HOUSING MATERIAL: NYLON 66 (UL)94V-0
- ◆ WORKING TEMPERATURE: 105°C
- ◆ COLOR: GREEN

PART NO	A
PA003-2	11.5
PA003-3	16.5
PA003-4	21.5
PA003-5	26.5
PA003-6	31.5
PA003-8	41.5
PA003-10	51.5



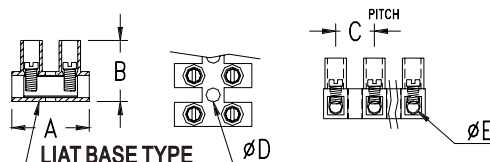
- ◆ HOUSING MATERIAL: NYLON 66 (UL)94V-2
- ◆ WORKING TEMPERATURE: 105°C
- ◆ COLOR: NATURAL

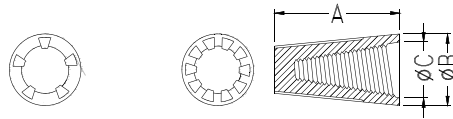
PART NO	A
PA11-2P	17.3
PA11-3P	27.5



PART NO	mm ² 線徑	Amp 安培	Volt 電壓	Screw 螺絲	A	B	C	D	E	POLES
★PA7-H	1.5	17.5	450V	M2.6X6	17.0	14.4	8.2	2.9	2.8	1~12
★PA7-DSH						13.4				
★PA7F-H						16.7				
★PA7F-DSH										
★PA9-H	2.5	24.0	500V	M3.0X7	20.2	10.0	3.6	5.0		
★PA9-DSH						12.2				
★PA9F-H									12.0	
★PA9F-DSH						3.9				
PA12H	6.0	41.0	500V	M3.5X7	23.8	19.0	4.4	4.8		
PA12HDS						12.0				
PA14H									13.5	
PA14HDS						3.6				

- ◆ HOUSING MATERIAL: NYLON 66 UL94V-2
- ◆ POLE: 1~12 POLES
- ◆ WORKING TEMPERATURE: 105°C
- ◆ PA8DS, PA10DS: WITH WIRE PROTECTOR
- ◆ APPROVED: UL、CSA、VDE、F、D、N、S...。
- ◆ COLOR: NATURAL

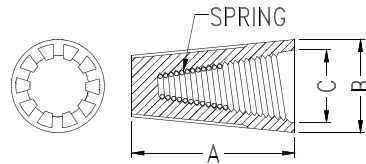




- ◆ MATERIAL:UREA
- ◆ UNIT:mm
- ◆ 單雙股線共用

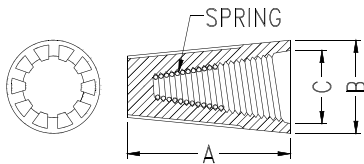
ONLY FOR:U3

PART NO	COLOR	A	B	C	Suitable Wires A.W.G	PACKAGE
U1	YELLOW	15.2	8.6	6.5	22-16	1000
U2	WHITE	17.5	10.0	8.0		
U3		22.5	11.2	9.4	22-14	



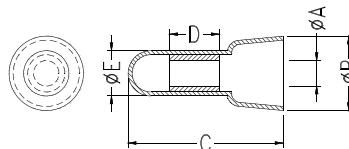
- ◆ MATERIAL:PVC
- ◆ COLOR:ORANGE
- ◆ UNIT:mm
- ◆ WITE SPRING INSRET

PART NO	WIRE SIZE RANGE		A	B	C	PACKAGE
	MAX	MIN				
P1	#18X2	#24X2	15.2	8.6	6.5	1000
P2	#16X3	#20X3	17.7	9.9	7.1	
P3	#14X3	#18X3	22.0	12.4	9.8	500
P4		#16X3	24.6	14.0	11.0	



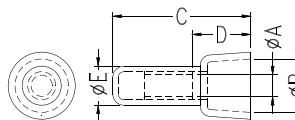
- ◆ MATERIAL:PBT(UL) 94V-0
- ◆ COLOR:BLACK
- ◆ UNIT:mm
- ◆ WITE SPRING INSRET

PART NO	A	B	螺紋內徑 C	適用電線範圍 SUITABLE WIRES A.W.G	PACKAGE
P1B	14.7	8.7	6.3	22-18	1000
P3B	21.8	12.5	9.7	22-14	500



- MATERIAL:
- ◆ HOUSING MAT'L:NYLON 66 (UL)94V-2
 - ◆ METAL MAT'L: TIN PLATED COPPER
 - ◆ COLOR:NATURAL
 - ◆ UNIT:mm

PART NO	WIRE RANGE	A	B	C	D	E	PACKAGE
CE1	#22-16 1.25 mm ²	2.5	7.7	18.0	7.0	5.0	1000
CE2	#16-14 2 mm ²	3.2	9.5	20.0		5.7	
CE5	#12-10 5.5 mm ²	4.4	12.3	25.5	8.4	7.6	
CE8	#8 8 mm ²	5.2	14.2	27.7	8.5	9.5	500

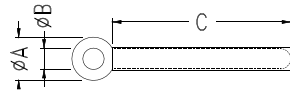


- ◆ HOUSING MAT'L:NYLON 66 (UL)94V-2
- ◆ METAL MAT'L: TIN PLATED COPPER
- ◆ COLOR:NATURAL
- ◆ UNIT:mm

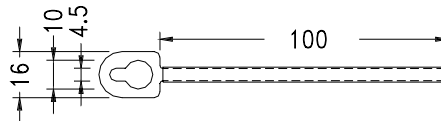
PART NO	WIRE RANGE	A	B	C	D	E	PACKAGE
C3	#22-16 1.25 mm ²	2.5	7.9	19.2	7.2	5.1	1000
C4	#16-14 2 mm ²	3.2	8.2	20.7	8.5	5.7	
C5	#12-10 5.5 mm ²	4.0	10.6	24.8	10.7	7.3	
C6	#8 8 mm ²	5.2	12.2	27.1	12.5	9.2	500



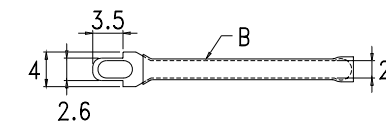
- ◆ MEATL MAT'L: STEEL
- ◆ PLACTIC MAT'L: SOFT PVC/ PVC TUBE(UL/CSA)
- ◆ COLOR: BLACK
- ◆ UNIT: mm



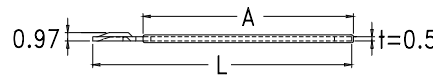
PART NO	A	B	C	PACKAGE
WL3-32T	7.5	3.3	32.0	1000
WL3-52T			52.0	
WL3-60T	8.0	3.6	62.0	
WL4-35T	8.5	4.2	35.0	
WL4-50T	8.0	4.1	52.0	
WL4-70T	7.5	4.2	74.5	
WL4-78T	8.0	4.1	78.5	500
WL5-70T	8.4	5.1	60.0	
WL6-78T	10.0	6.0	78.0	



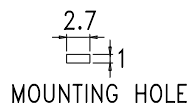
PART NO	PACKAGE
WLC-1	500



- ◆ METAL MATERIAL: STEEL
- ◆ METAL FINISH: TIN PLATED
- ◆ PLASTIC MAT'L: POLYOLFEIN (UL) CSA/ PVC (UL) CSA

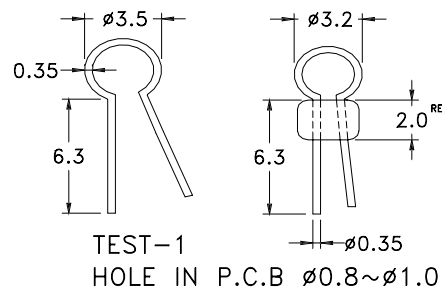
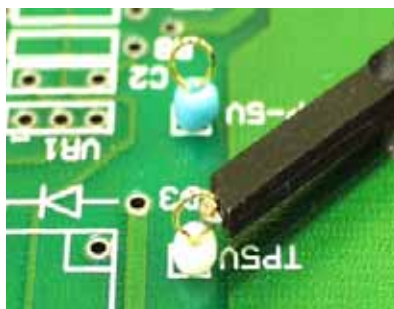


- ◆ COLOR: BLACK
- ◆ UNIT: mm



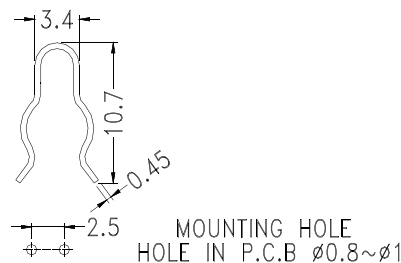
PART NO	L	A	B	PACKAGE
WLD-30H	30.0	24.0	1.5 HEAT SHRINKING	1000
WLD-50H	50.0	47.0		
WLD-30T	30.0	22.0	1.93 PVC TUBE	
WLD-50T	50.0	45.0		

Electronic Component - Test Pin



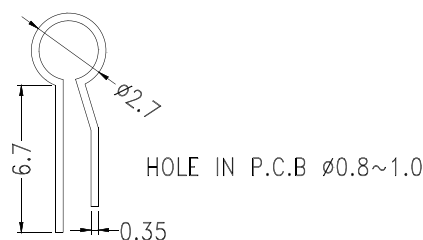
- ◆ MATERIAL: P.B.T(UL)
- ◆ FINISH: PHOSPHER BRONZE GOLD PLATED
- ◆ UNIT: mm

PART NO	COLOR	PACKAGE
TEST-1 (R)	紅 (RED)	1000
TEST-1 (GR)	綠 (GREEN)	
TEST-1 (BU)	藍 (BLUE)	
TEST-1 (BK)	黑 (BLACK)	
TEST-1 (Y)	黃 (YELLOW)	
TEST-1 (W)	白 (WHITE)	



- ◆ MATERIAL: GOLD PLATED COPPER
- ◆ UNIT: mm

PART NO	PACKAGE
TEST-2	1000



- ◆ MATERIAL: GOLD PLATED COPPER
- ◆ UNIT: mm

PART NO	PACKAGE
TEST-3	1000