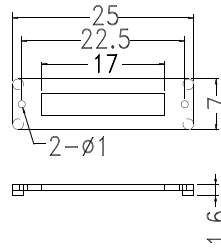
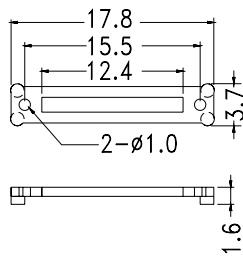
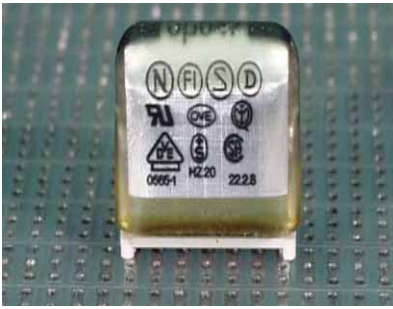


# Electronic component - Capacitor Washer

Hankook Fastener



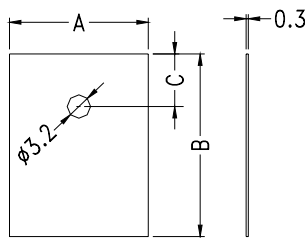
- ◆ MATERIAL: NYLON 66(UL)
- ◆ FLAME CLASS :94V-0
- ◆ COLOR:NATURAL
- ◆ UNIT:mm

PART NO	PACKAGE
CWL-15	1000

PART NO	PACKAGE
CWL-22	1000

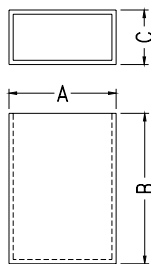
# Electronic component - SILICON INSULATOR COVER

Hankook Fastener

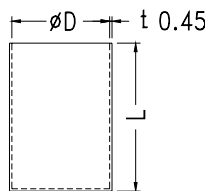


- ◆ MATERIAL:SILICON(UL)
- ◆ FLAME CLASS :94V-0
- ◆ COLOR:GRAY
- ◆ UNIT:mm

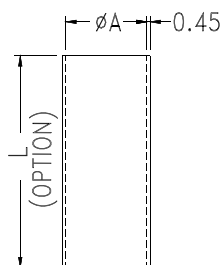
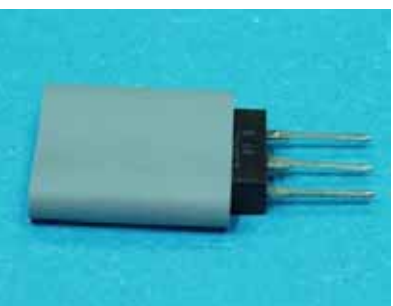
PART NO	A	B	C	PACKAGE
TO-3P	19.0	25.0	7.2	1000
TO-220	13.2	19.0	5.0	



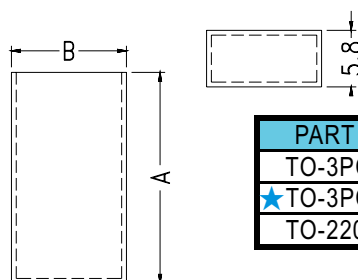
PART NO	A	B	C	THICKNESS	PACKAGE
SRT-111758	11.4	16.0	5.8	0.45	500
SRT-182864	18.0	28.5	6.4	0.75	
SRT-203464	20.0	35.0	6.4		



PART NO	D	L	PACKAGE
SCT-0726	7.8	26.0	500
SCT-1615	16.7	15.0	
★SCT-1825	18.5	25.0	
SCT-1925	18.7		



PART NO	A
SRT6	6.0
SRT8	8.0
SRT10	10.0
SRT12	12.0
SRT14	14.0
SRT16	16.0
SRT18	18.0
SRT20	20.0

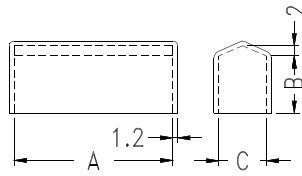


PART NO	A	B	THICKNESS	PACKAGE
TO-3PCV	28.5	17.5	0.45	1000
★TO-3PCV-C	25.0			
TO-220CV	21.7	11.5		

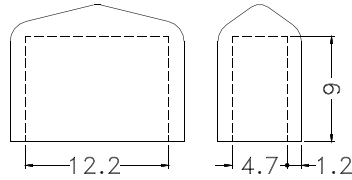
# Electronic Component - Fuse / Connector Covers

Hankook Fastener

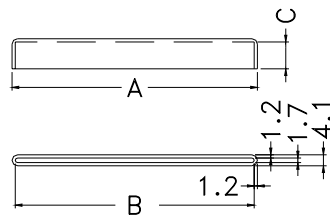
- ◆ MATERIAL: SOFT P.V.C
- ◆ COLOR: NATURAL/BLUE
- ◆ UNIT: mm



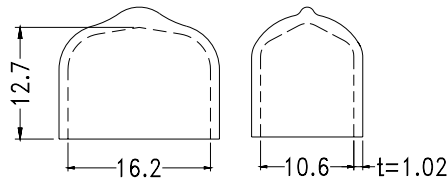
PART NO	A	B	C	PACKAGE
FUSE-1	20.0	11.0	6.0	1000
FUSE-2	31.8	11.5	9.5	500
FUSE-3	36.1	9.9	8.1	1000



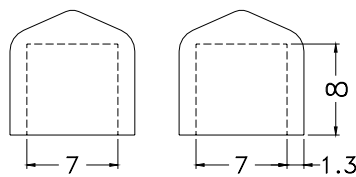
PART NO	PACKAGE
FH-13	1000



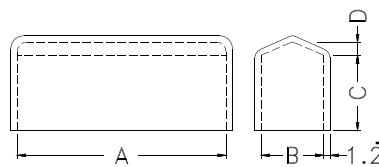
PART NO	A	B	C	PACKAGE
FUSE-5	65.9	63.5	7.0	1000
FUSE-6	91.4	89.0	10.0	



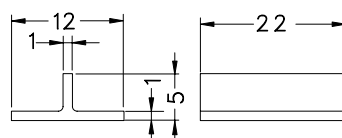
PART NO	PACKAGE
FH-17	1000



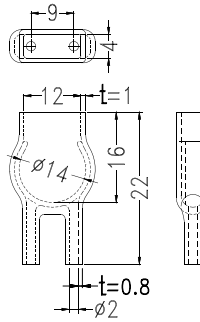
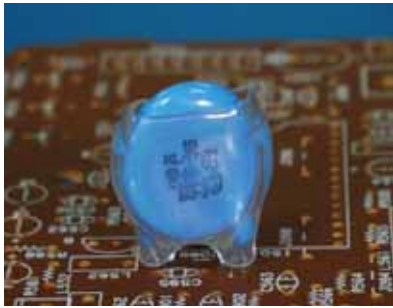
PART NO	PACKAGE
VC0707008B	1000



PART NO	A	B	C
FH-1	20.0	6.0	10.5
FH-1L	22.0		10.0
FH-1S	18.0	5.3	11.5
FH-3A	31.0	8.1	
FH-3	31.8	9.5	

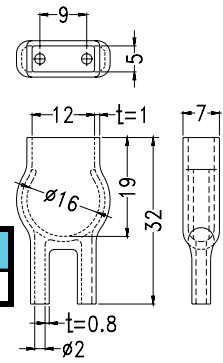


PART NO	PACKAGE
FHBBU-22	1000

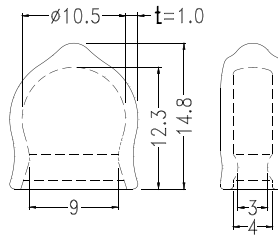


- ◆ MATERIAL:SOFT P.V.C
- ◆ COLOR:NATURAL/BLUE
- ◆ UNIT:mm

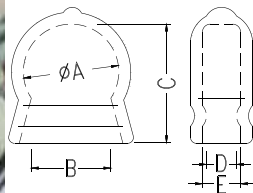
PART NO	PACKAGE
HU-14	1000



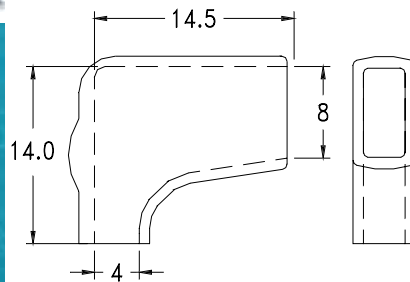
PART NO	PACKAGE
HU-16	1000



PART NO	PACKAGE
HU-10	1000



PART NO	A	B	C	D	E	PACKAGE
HU-8	8.5	7.5	10.0	3.0	3.0	1000
HU-12	12.0	10.0	15.0	3.8	4.8	



WIRE SIZE(O.D):  $\phi 4.0$

Terminal sleeve

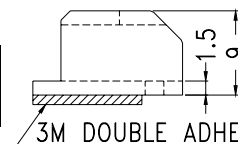
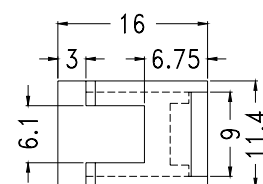
PART NO	PACKAGE
610301	1000



Terminal Housing

- ◆ MATERIAL:PC (UL)
- ◆ FLAME CLASS:94V-2
- ◆ COLOR:NATURAL
- ◆ UNIT:mm

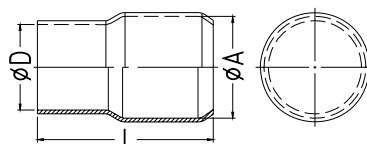
PART NO	PACKAGE
PCTT-1	1000



3M DOUBLE ADHESIVE TAPE



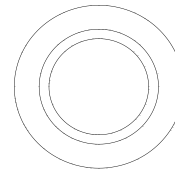
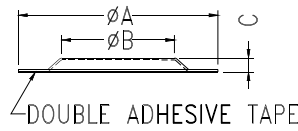
Terminal sleeve



PVC CAP

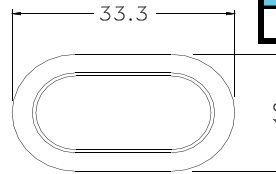
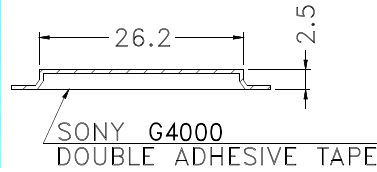
# Electronic component - INSULATED CAP

Hankook Fastener

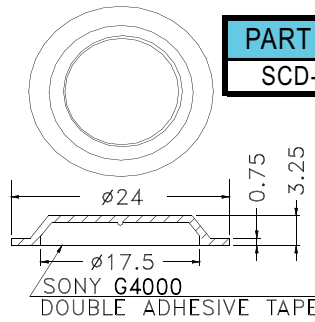


- ◆ MATERIAL:PC FILM(UL)
- ◆ FLAME CLASS:94V-0
- ◆ COLOR:BLACK
- ◆ THICKNESS:0.3
- ◆ UNIT:mm

PART NO	A	B	C	DOUBLE ADHESIVE TAPE	PACKAGE
SCD-1	24.0	15.0	2.0	NITTO DENKO 5015	1000
SCD-2	31.5	18.0			
SCD-3	32.0	22.0	2.2	SONY G9303S	500
SCD-4	37.0			SONY T4000	



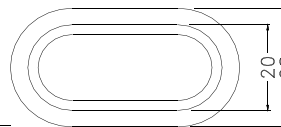
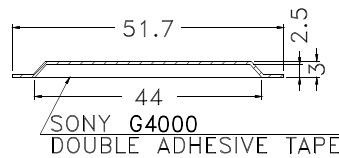
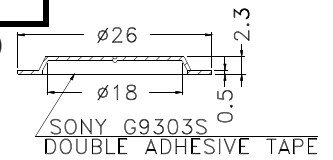
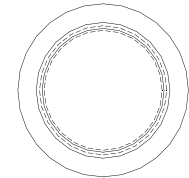
PART NO	PACKAGE
SCD-5	2000



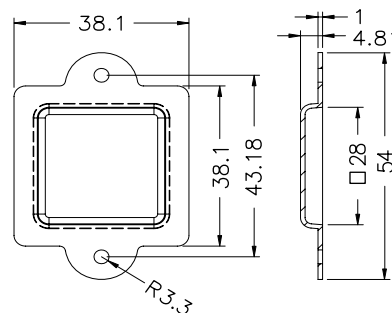
PART NO	PACKAGE
SCD-6	2000

PART NO	PACKAGE
SCD-8	2000

- ◆ MATERIAL:NYLON 66(UL)
- ◆ FLAME CLASS:94V-2
- ◆ COLOR:BLACK
- ◆ UNIT:mm

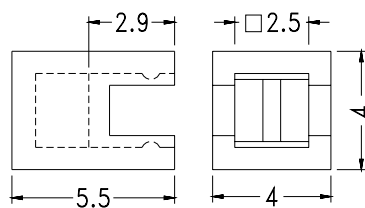
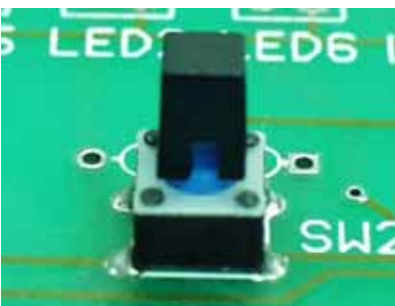


PART NO	PACKAGE
SCD-7	2000



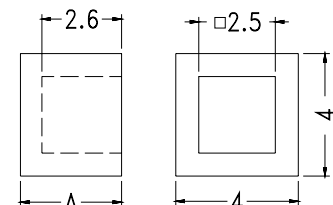
- ◆ MATERIAL:PC(UL)
- ◆ FLAME CLASS:94V-0
- ◆ COLOR:BLACK
- ◆ UNIT:mm

PART NO	PACKAGE
SCD-9PC	2000



- ◆ MATERIAL:ABS(UL)
- ◆ FLAME CLASS:94HB
- ◆ COLOR:BLACK
- ◆ UNIT:mm

PART NO	PACKAGE
TSC-1	1000



PART NO	A	PACKAGE
TSC-2	3.3	2000
TSC-2A	4.0	

Tact Switch Cap