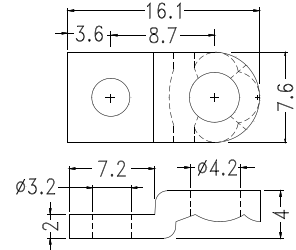
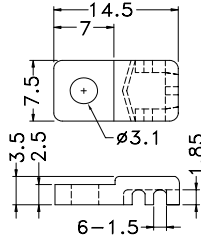
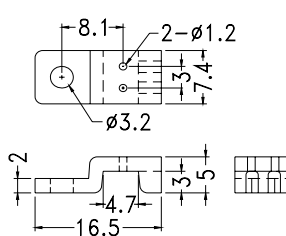
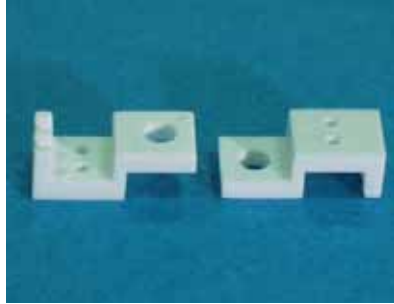
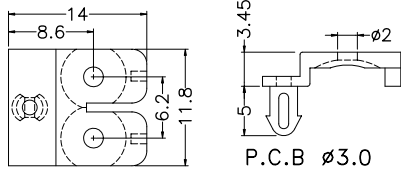
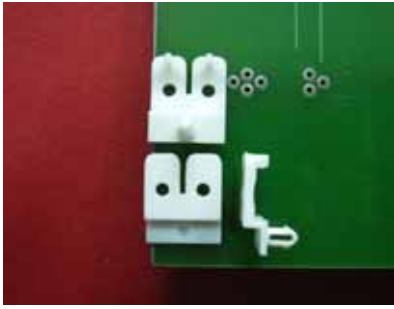


- ◆ MATERIAL: NYLON 66(UL)
- ◆ FLAME CLASS :94V-0
- ◆ COLOR:NATURAL
- ◆ UNIT:mm

PART NO	PACKAGE
PHK-1	1000

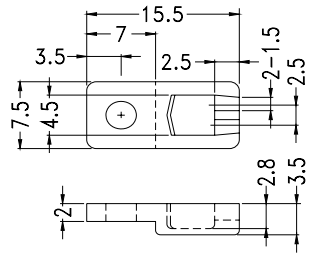
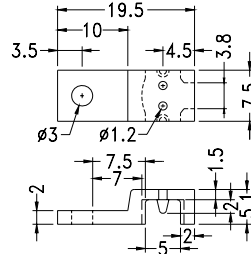
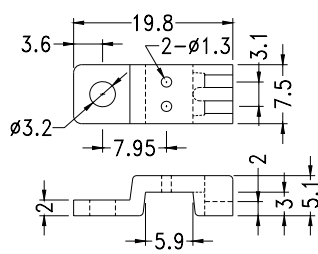


PART NO	PACKAGE
PH-1	1000

PART NO	PACKAGE
PH-2	1000

PART NO	PACKAGE
PH-3	1000

- ◆ MATERIAL:P.B.T(UL)耐高溫
- ◆ FLAME CLASS:94V-0
- ◆ COLOR:NATURAL/WHITE
- ◆ UNIT:mm

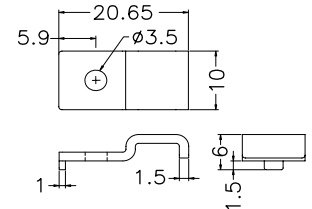
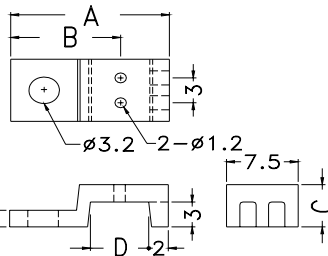


PART NO	PACKAGE
PH-5	1000

PART NO	PACKAGE
PH-7	1000

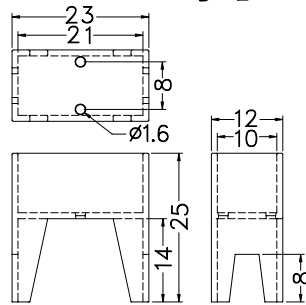
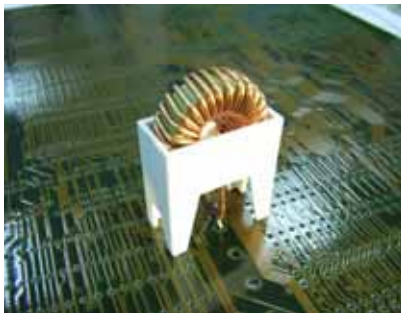
PART NO	PACKAGE
PH-2A	1000

PART NO	A	B	C	D	PACKAGE
PH-1A	16.6	11.5	5.1	6.1	1000
★ PH-11	17.15	11.8	4.6	6.7	

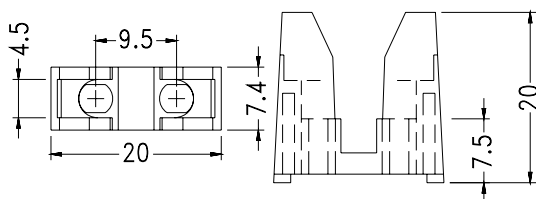


PART NO	PACKAGE
PH-12	1000

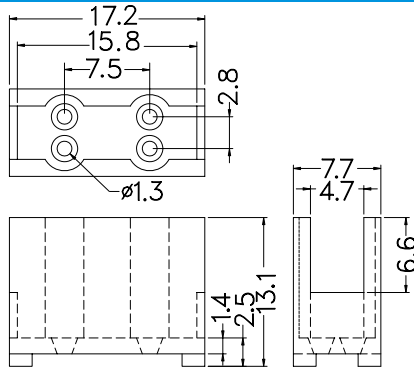
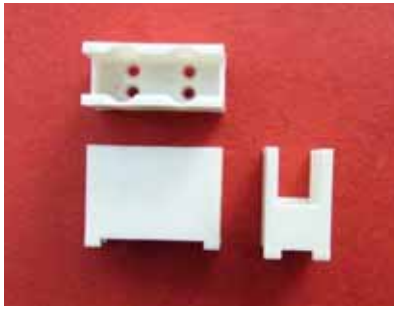
- ◆ MATERIAL:P.B.T
- ◆ COLOR:NATURAL
- ◆ UNIT:mm



PART NO	PACKAGE
COILC-21	500



PART NO	PACKAGE
PHC-1	500



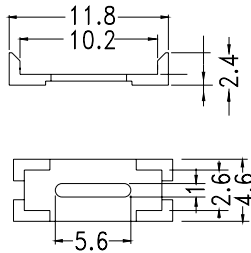
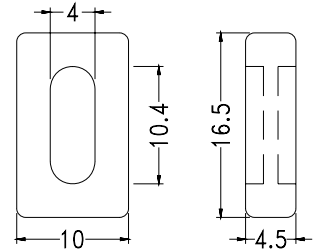
- ◆ MATERIAL:P.B.T(UL)耐高溫
- ◆ FLAME CLASS:94V-0
- ◆ COLOR:NATURAL
- ◆ UNIT:mm

PART NO	PACKAGE
PHC-2	500

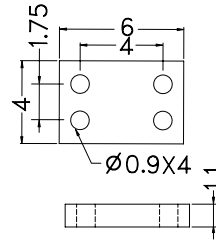


- ◆ MATERIAL:NYLON 66(UL)
- ◆ FLAME CLASS :94V-2
- ◆ COLOR:NATURAL
- ◆ UNIT:mm

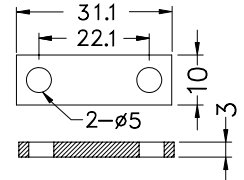
PART NO	PACKAGE
DVT-1	1000



PART NO	PACKAGE
QW-2	2000



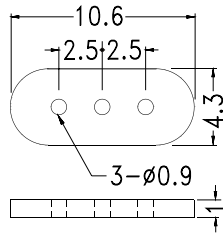
PART NO	PACKAGE
QW-7	2000



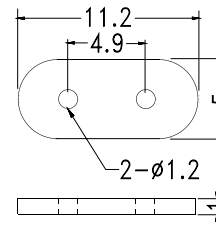
PART NO	PACKAGE
SWS311030	1000

- ◆ MATERIAL:NYLON 66(UL)
- ◆ FLAME CLASS :94V-2
- ◆ COLOR:NATURAL
- ◆ UNIT:mm

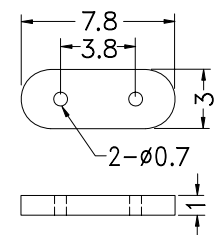
Crystal Washer



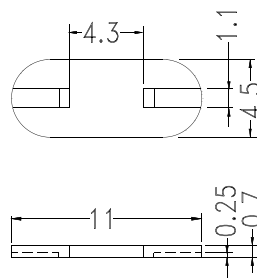
PART NO	PACKAGE
QW-1	2000



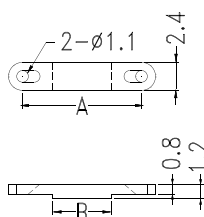
PART NO	PACKAGE
QW-3	2000



PART NO	PACKAGE
QW-6	2000



PART NO	PACKAGE
QW-4	2000



PART NO	A	B	PACKAGE
CWT-8	7.6	4.0	2000
CWT-10	10.1	5.0	

Capacitor Washer