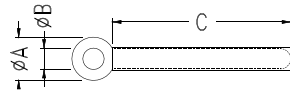
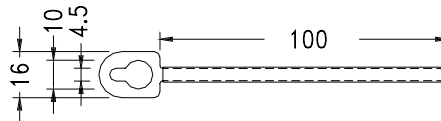
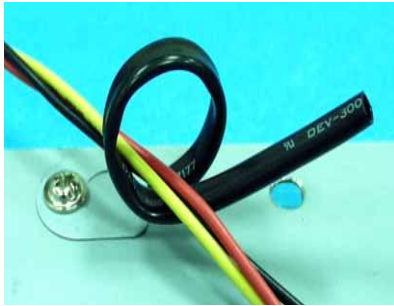




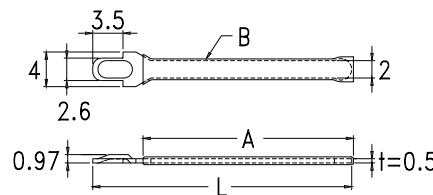
- ◆ MEATL MAT'L: STEEL
- ◆ PLACTIC MAT'L: SOFT PVC/ PVC TUBE(UL/CSA)
- ◆ COLOR: BLACK
- ◆ UNIT: mm



PART NO	A	B	C	PACKAGE
WL3-32T	7.5	3.3	32.0	1000
WL3-52T			52.0	
WL3-60T	8.0	3.6	62.0	
WL4-35T	8.5	4.2	35.0	
WL4-50T	8.0	4.1	52.0	
WL4-70T	7.5	4.2	74.5	
WL4-78T	8.0	4.1	78.5	500
WL5-70T	8.4	5.1	60.0	
WL6-78T	10.0	6.0	78.0	

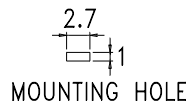


PART NO	PACKAGE
WLC-1	500

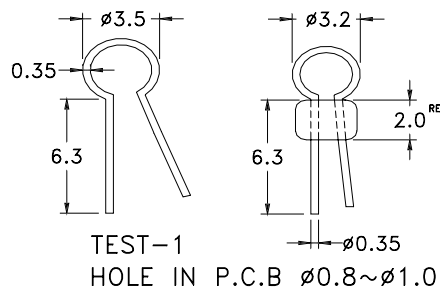
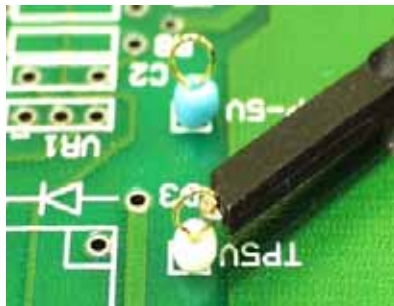


- ◆ METAL MATERIAL: STEEL
- ◆ METAL FINISH: TIN PLATED
- ◆ PLASTIC MAT'L: POLYOLFEIN (UL) CSA/ PVC (UL) CSA
- ◆ COLOR: BLACK
- ◆ UNIT: mm

PART NO	L	A	B	PACKAGE
WLD-30H	30.0	24.0	1.5 HEAT SHRINKING	1000
WLD-50H	50.0	47.0		
WLD-30T	30.0	22.0	1.93 PVC TUBE	
WLD-50T	50.0	45.0		

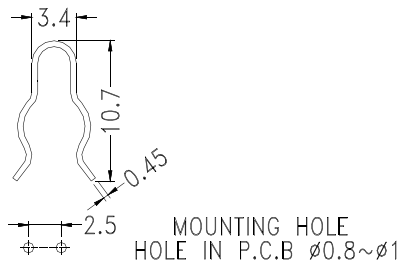


Electronic Component - Test Pin



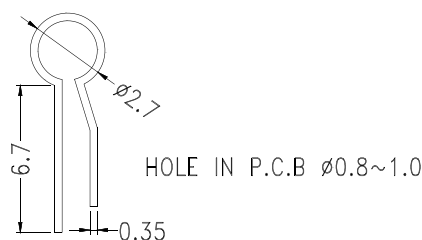
- ◆ MATERIAL: P.B.T(UL)
- ◆ FINISH: PHOSPHER BRONZE GOLD PLATED
- ◆ UNIT: mm

PART NO	COLOR	PACKAGE
TEST-1 (R)	紅 (RED)	1000
TEST-1 (GR)	綠 (GREEN)	
TEST-1 (BU)	藍 (BLUE)	
TEST-1 (BK)	黑 (BLACK)	
TEST-1 (Y)	黃 (YELLOW)	
TEST-1 (W)	白 (WHITE)	



- ◆ MATERIAL: GOLD PLATED COPPER
- ◆ UNIT: mm

PART NO	PACKAGE
TEST-2	1000

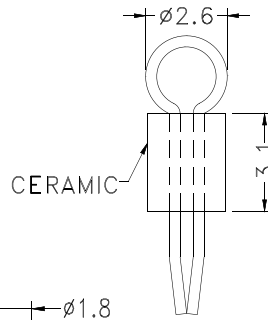
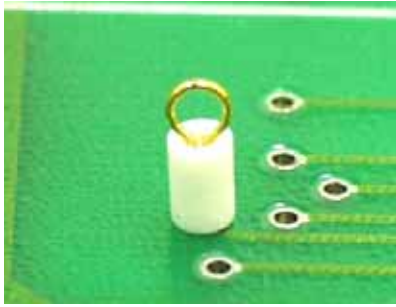


- ◆ MATERIAL: GOLD PLATED COPPER
- ◆ UNIT: mm

PART NO	PACKAGE
TEST-3	1000

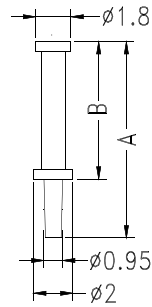
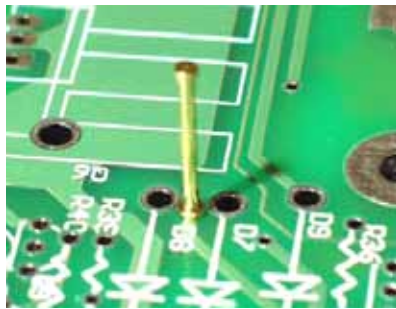
- ◆ MATERIAL: SPRING STEEL
NICKEL PLATED
- ◆ FINISH: GOLD PLATED
- ◆ UNIT: mm

PART NO	PACKAGE
TEST-7CN	1000



- ◆ MATERIAL: GOLD PLATED COPPER
- ◆ UNIT: mm

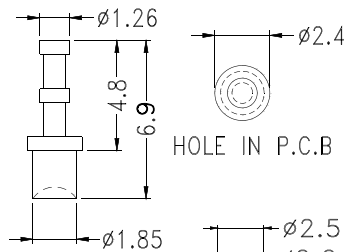
PART NO	A	B	PACKAGE
TEST-4	14.0	11.0	1000
TEST-5	10.0	7.0	2000



HOLE IN P.C.B \varnothing 0.95

- ◆ MATERIAL: NICKEL PLATED COPPER
- ◆ UNIT: mm

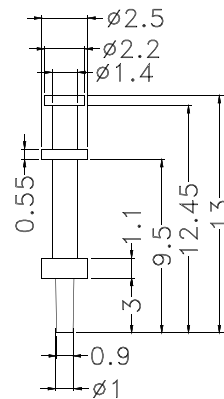
PART NO	PACKAGE
TEST-6	2000



HOLE IN P.C.B \varnothing 2.0

- ◆ MATERIAL: GOLD PLATED COPPER
- ◆ UNIT: mm

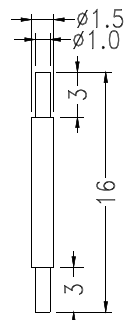
PART NO	PACKAGE
TEST-8	2000



HOLE IN P.C.B \varnothing 1.0

- ◆ MATERIAL: TIN PLATED BRASS
- ◆ UNIT: mm

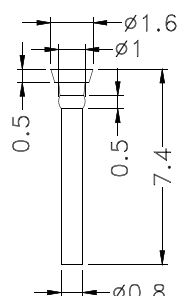
PART NO	PACKAGE
TEST-9	2000



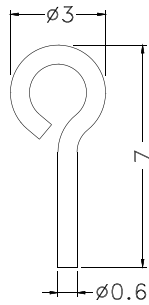
HOLE IN PCB \varnothing 1.0

- ◆ MATERIAL: TIN PLATED COPPER
- ◆ UNIT: mm

PART NO	PACKAGE
TEST-10	2000



HOLE IN P.C.B \varnothing 0.8~0.9



HOLE IN P.C.B ϕ 0.8

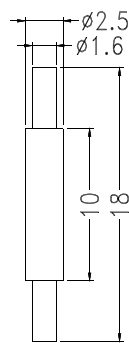
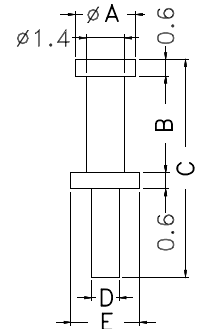
- ◆ MATERIAL:TIN PLATED BRASS
- ◆ UNIT:mm

PART NO	PACKAGE
TEST-12	2000



PART NO	A	B	C	D	E	PACKAGE
TEST-22	2.2	3.5	7.9	1.0	2.5	2000
★TEST-34	1.6	3.8	8.0	0.8	1.6	

HOLE IN P.C.B ϕ 1.0



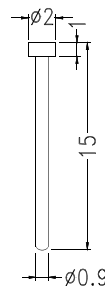
HOLE IN P.C BOARD ϕ 1.7

- ◆ MATERIAL:TIN PLATED BRASS
- ◆ UNIT:mm

PART NO	PACKAGE
TEST-23	2000

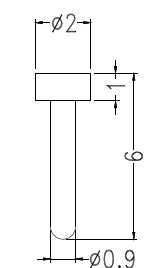


HOLE IN P.C BOARD ϕ 0.9



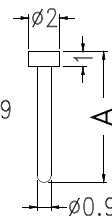
- ◆ MATERIAL:TIN PLATED BRASS
- ◆ UNIT:mm

PART NO	PACKAGE
TEST-24	2000



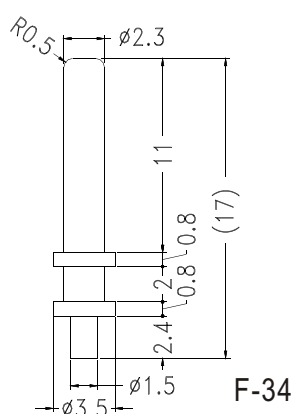
HOLE IN P.C BOARD ϕ 0.9

HOLE IN P.C BOARD ϕ 0.9



PART NO	PACKAGE
TEST-25	2000

PART NO	A	PACKAGE
TEST-26	8.5	2000
TEST-28	10.0	



F-34

PART NO	PACKAGE
TEST-27	2000