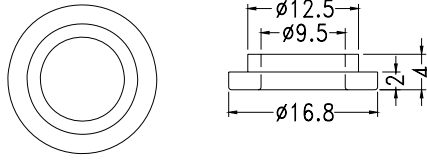


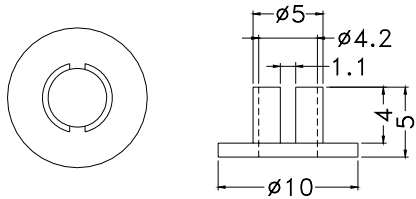
Electronic Component - WASHER

Hankook Fastener

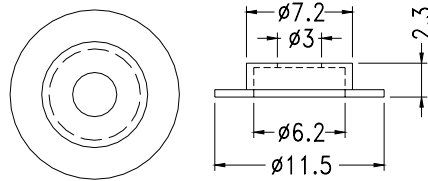
- ◆ MATERIAL: NYLON 66(UL)
- ◆ FLAME CLASS :94V-2
- ◆ COLOR:NATURAL
- ◆ UNIT:mm



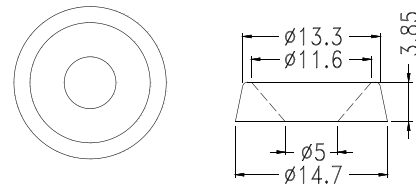
PART NO	PACKAGE
FUG-1	1000



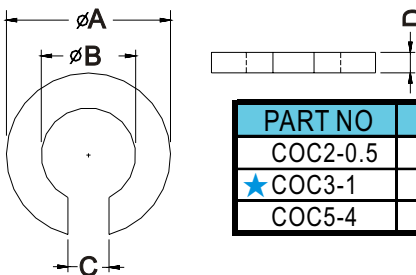
PART NO	PACKAGE
TWU-1	2000



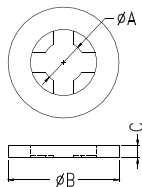
PART NO	PACKAGE
WSC-1	2000



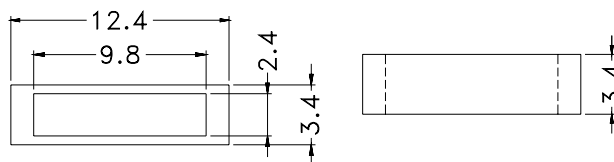
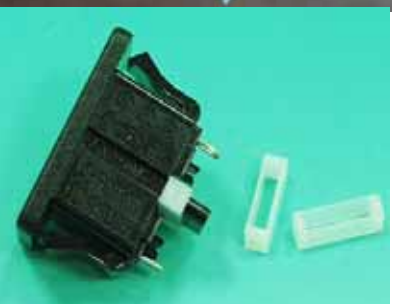
PART NO	PACKAGE
WSU-515	2000



PART NO	A	B	C	D	PACKAGE
COC2-0.5	4.0	2.3	1.0	0.5	2000
★COC3-1	6.0	3.0		1.0	
COC5-4	8.0	5.0	2.5	4.0	1000

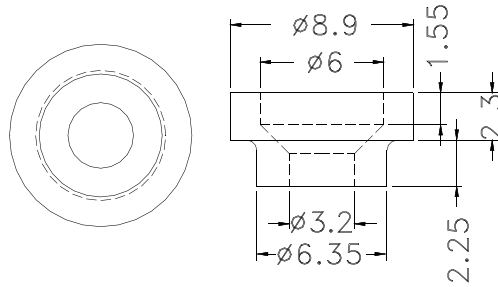


PART NO	A	B	C	FOR SCREW	PACKAGE
KWS-3	2.5	6.7	0.8	M3	2000
KWS-4	3.3	8.0	1.0	M4	
★KWS-6	6.0	15.0	0.9	M6	
KWS-632	3.2	8.3	0.8	M6-32UNC	



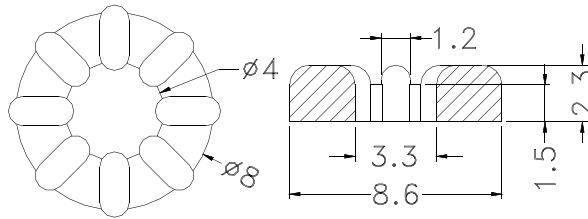
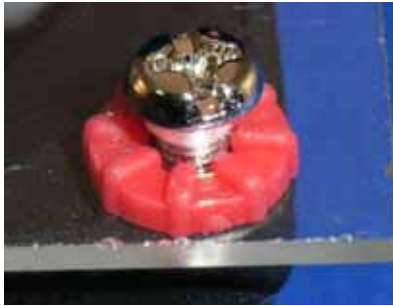
PART NO	PACKAGE
SQCP-3.4	2000

F-9



- ◆ MATERIAL:PC(UL)
- ◆ FLAME CLASS:94V-0
- ◆ COLOR:NATURAL
- ◆ UNIT:mm

PART NO	PACKAGE
WSF-3	2000

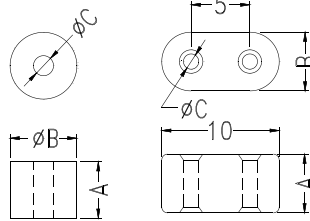


- ◆ MATERIAL:TPE
- ◆ COLOR:RED
- ◆ UNIT:mm

PART NO	PACKAGE
WSQ4-2	2000



Ceramic Washer

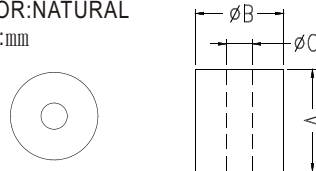


ONLY FOR 6HS-6

PART NO	A	B	C	PACKAGE
CHS-1	4.5	3.8	1.0	2000
CHS-2	9.0			
CHS-3	3.0	4.5	1.8	
CHS-4	4.5			
CHS-5	9.0			
CHS-6	5.0	5.0	1.3	
CHS-7	6.9	2.6	0.9	
CHS-8	3.1	2.5	1.1	
CHS-9	15.4	4.1	1.9	



- ◆ MATERIAL:P.B.T (UL)
- ◆ FLAME CLASS :94V-0
- ◆ COLOR:NATURAL
- ◆ UNIT:mm

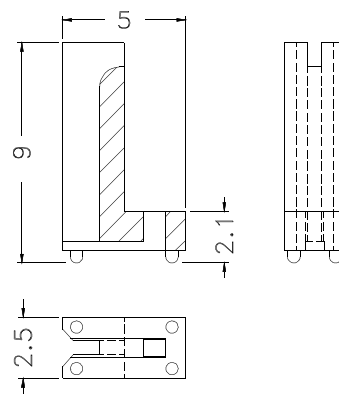


PART NO	A	B	C	PACKAGE
PW-1	4.2	4.0	1.3	2000
PW-1A		4.5	1.8	
PW-2	8.0	4.0	1.3	1000
PW-3	3.0			
PW-4	3.6			3.5
PW-5	2.0	5.0	2.0	
PW-6	2.5	3.2	1.4	

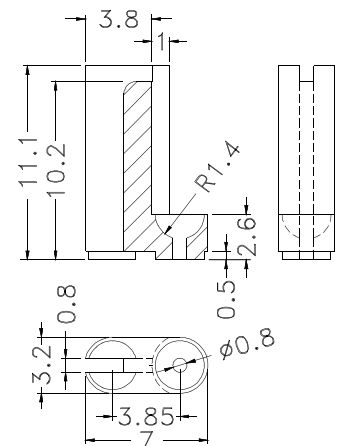


- ◆ MATERIAL:PPS(UL)耐高溫
- ◆ FLAME CLASS:94V-0
- ◆ COLOR:BLACK
- ◆ UNIT:mm

Resistant Holder



PART NO	PACKAGE
RPCL-9	2000



PART NO	PACKAGE
RPCL-11	2000