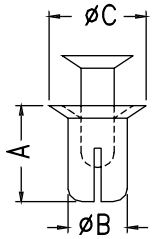
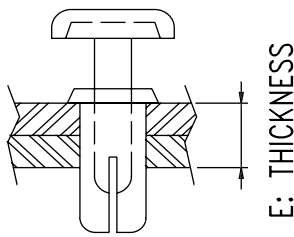
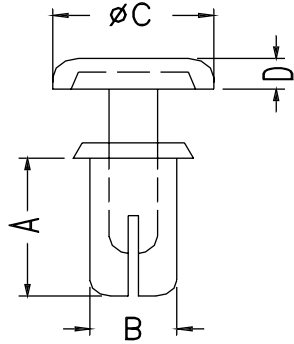
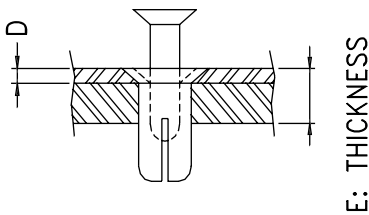




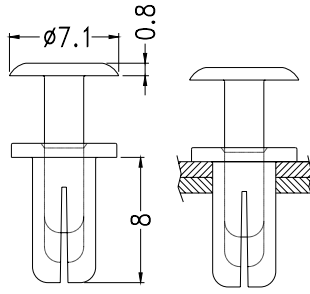
- ◆ MATERIAL: NYLON66 (UL)
- ◆ FLAME CLASS: 94V-2
- ◆ COLOR: BLACK/WHITE
- ◆ UNIT: mm



ONLY FOR
SR4-6F~ 7F~7FS~8F
SR4-13F,SR3-13F,SR5-4.5F



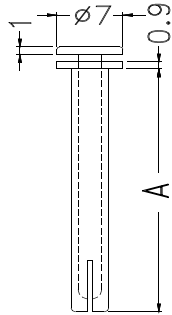
PART NO	A	B	C	D	E	MOUNTING HOLES	PACKAGE	
SR2-4	4.0	2.0	3.5	0.5	2.0~3.0	2.0	1000	
SR2-5	5.0		4.8	0.75	2.5~3.5			
SR2-6	6.0				3.5~4.5			
SR2.6-3.2	3.2	2.6	5.0	1.7	1.0~2.0	2.6		
SR2.6-4.2	4.2				2.0~3.0			
SR2.6-4.8	4.8				2.5~3.4			
SR2.6-5.5	5.5			1.4	3.0~4.3			
SR2.6-7.2	7.2							
SR3-3.5	3.6	3.0	6.3	1.7	1.0~2.0	3.0		
SR3-4.5	4.5				2.0~3.0			
SR3-5.5	5.5				3.0~4.0			
SR3-6	6.0				3.5~4.5			
SR3-6.5	6.5				4.0~5.0			
SR3-7.5	7.5				5.0~6.0			
SR3-8	8.1				5.5~6.5			
SR3-9	9.1				6.5~7.5			
SR3-10	10.0				7.5~8.5			
SR3-13	13.0				6.2		1.3	10.0~11.0
SR3-13F	13.0	3.2	5.3					
SR3-15	15.5	3.0	6.2	1.7	11.5~13.0	3.0		
SR3-18.5	18.5				15.0~16.5			
SR3.5-4.5	4.5	3.5	6.3	1.7	2.0~3.0	3.5		
SR3.5-5	5.0				2.5~3.5			
SR3.5-5.5	5.5				3.0~4.0			
SR3.5-6	6.0				4.5~5.5			
SR3.5-7	7.0				6.0~7.0			
SR3.5-9	9.0				18.5~20.0			
★ SR3.5-23	23.0	3.45						
SR4-5	5.0	4.0	7.8	1.9	2.5~3.5	4.0		
SR4-6	6.1				7.5		1.1	3.5~4.5
SR4-6F								3.0~4.0
SR4-7	7.1		8.0	2.0	4.5~5.5			
SR4-7FS	7.0		6.4	0.8	3.5~5.0			
SR4-8	8.1		8.0	2.0	5.5~6.5			
SR4-8F	8.2		7.5	1.1				
SR4-9	9.0		8.0	2.0	6.5~7.5			
SR4-10	10.0				7.5~8.5			
SR4-12	12.0				9.5~10.5			
SR4-13F	14.5				6.4		1.0	10.0~11.0
SR4-14	13.7				11.0~12.0			
SR4-15	15.3		8.0	2.0	11.5~13.0			
SR4-20	20.0				15.0~17.0			
SR4-25	24.5				22.0~23.0			
SR5-4.5	4.6	5.0	8.9	2.2	1.5~2.5	5.0		
SR5-4.5F	7.0		8.5	2.5				
SR5-5.5	5.5		8.9	2.2	2.5~3.5			
SR5-6.5	6.5				3.5~4.5			
SR5-7.5	7.5				4.5~5.5			
SR5-8.5	8.4				5.5~6.5			
SR6-6	6.0				6.0		12.0	2.5



CHASSIS $\varnothing 4$
THICKNESS 5.5~6.5

- ◆ MATERIAL: NYOLN 66(UL)
- ◆ FLAME CLASS: 94V-2
- ◆ COLOR: BLACK
- ◆ UNIT: mm

PART NO	PACKAGE
SRF4-8	1000

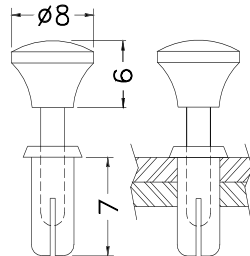


PART NO	A	PACKAGE
★ SRF4-28	28	500
★ SRF4-30	30	
SRF4-31	31	



CHASSIS $\varnothing 4$

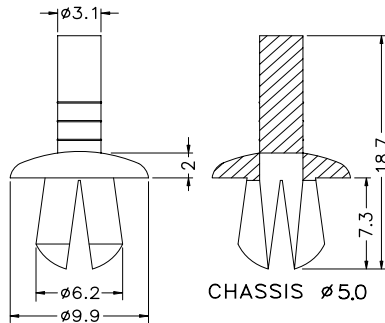
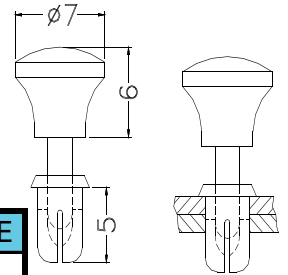
CHASSIS $\varnothing 4.1$
THICKNESS 4.5~5.5



PART NO	PACKAGE
SRS4-7P	1000

CHASSIS $\varnothing 3.5$
THICKNESS 2.5~3.5

PART NO	PACKAGE
SRS3.5-5P	1000

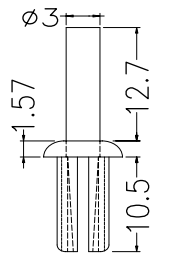


CHASSIS $\varnothing 5.0$

PART NO	PACKAGE
PSR5-7	1000



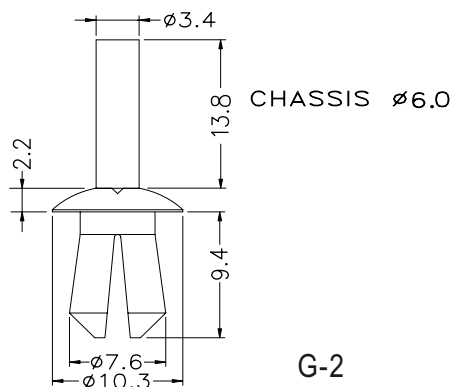
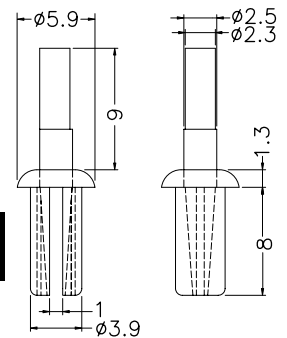
PART NO	PACKAGE
PSR48-10	1000



CHASSIS $\varnothing 4.6 \sim 4.8$

PART NO	PACKAGE
PSR4-8	1000

CHASSIS $\varnothing 4.0$



CHASSIS $\varnothing 6.0$

PART NO	PACKAGE
PSR6-11	1000

Plastic Fastener - SNAP RIVET

Hankook Fastener

- ◆ MATERIAL: NYLON 66(UL)
- ◆ FLAME CLASS: 94V-2
- ◆ COLOR: BLACK
- ◆ UNIT: mm

PART NO	PACKAGE
PR-1	500

PART NO	PACKAGE
PR-2	1000

PART NO	PACKAGE
CAPR-10	500

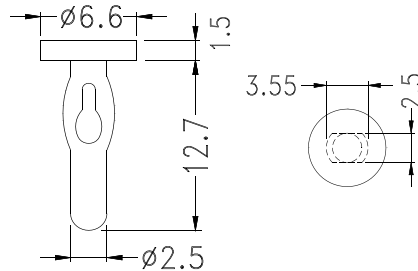
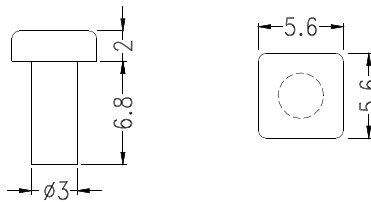
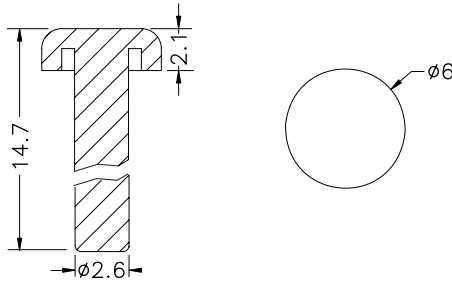
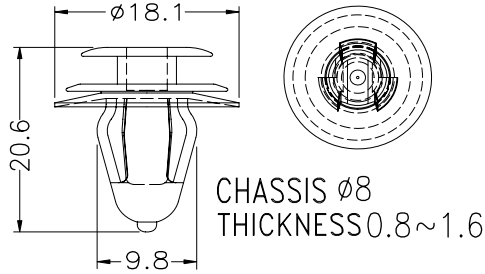
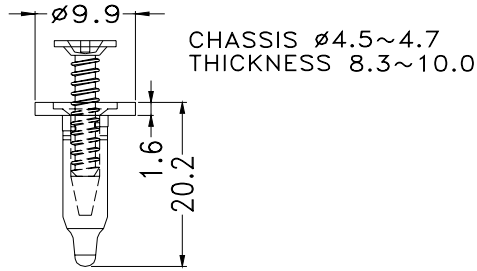
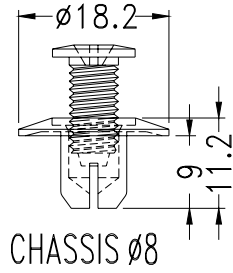
Pin

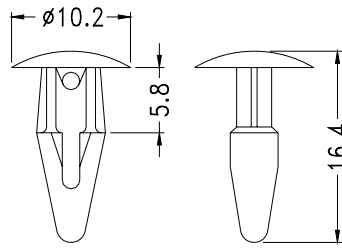
PART NO	PACKAGE
CNPS8000	1000

Pin

PART NO	PACKAGE
ACSR-7	2000

PART NO	PACKAGE
PIC-14	1000

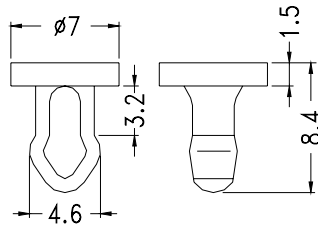




CHASSIS $\phi 5$

- ◆ MATERIAL:P.O.M(UL)/NYLON 66(UL)
- ◆ FLAME CLASS:94HB/94V-2
- ◆ COLOR:WHITE/BLACK/SILVER GRAY
- ◆ UNIT:mm

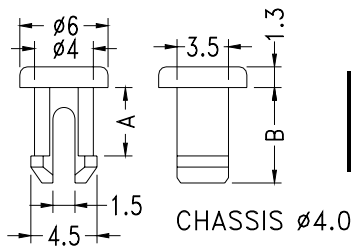
PART NO	PACKAGE
MBT-1	1000



CHASSIS $\phi 4.0$

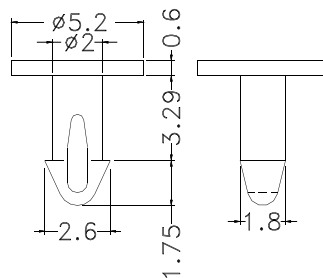
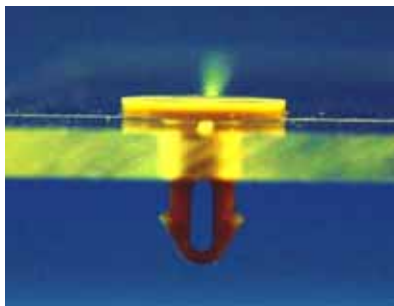
- ◆ MATERIAL:NYLON 66(UL)
- ◆ FLAME CLASS:94V-2
- ◆ COLOR:BLACK
- ◆ UNIT:mm

PART NO	PACKAGE
MBT-2	2000

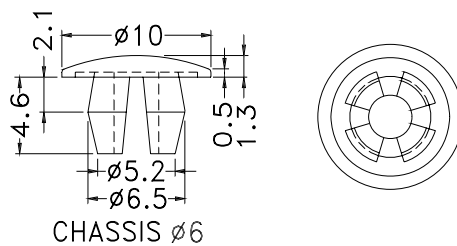


CHASSIS $\phi 4.0$

PART NO.	A	B	PACKAGE
MBT-7	4.3	6.0	2000
MBT4-2	2.0	3.7	

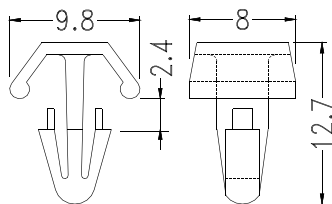
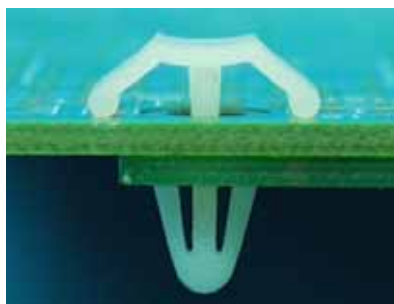


PART NO	PACKAGE
MB-14	2000



CHASSIS $\phi 6$

PART NO	PACKAGE
MBT6-2	2000



CHASSIS $\phi 4$
THICKNESS 2.5~3.2

PART NO	PACKAGE
MB-10	1000